



**City of Pompano Beach, Purchasing Division
1190 N.E. 3rd Avenue, Building C
Pompano Beach, Florida, 33060**

BID H-58-11 -- FLUORIDE METERING SKID SYSTEM

September 28, 2011

The City of Pompano Beach is currently soliciting bids to establish a contract for the purchase of a fluoride metering skid system as specified. Sealed bids will be received until 2:00 p.m. (local), October 21, 2011, in the Purchasing office at 1190 North East 3rd Avenue, Building C, Pompano Beach, Florida. These bids will then be publicly opened at the above time and date in the presence of City officials. Bid openings are open to the public. All bidders and/or their representatives are invited to be present. Bids may not be submitted by facsimile.

Once opened, the bids will be tabulated, evaluated, and presented to the appropriate City officials for contract award.

There are three (3) sections in this bid: Specifications/Special Conditions, General Conditions, and Proposal. Please read all sections thoroughly. Complete the bid in accordance with the instructions and return all numbered pages, initialed at the bottom of each page, when you submit your bid package. Failure to do so may result in the rejection of your bid.

If you need any additional information regarding this bid, please contact Leeta Hardin, General Services Director, at (954) 786-4098.

SECTION I - SPECIFICATIONS/SPECIAL CONDITIONS

A. Intent

The intent of this bid is to establish a contract for the purchase of a fluoride (hydrofluosilicic acid) metering skid system, delivered, as specified herein. The selected firm will supply the equipment, and deliver to the job site; equipment installation to be performed by others. After installation, the vendor will return for Mechanical and Process Start-Up Services, and Operator Training.

B. Basis of Award

Award will be made to the lowest responsive, responsible bidder based on the grand total.

C. Pricing

All prices bid shall be F.O.B. destination/delivered to the City of Pompano Beach Water Treatment Plant, 301 N.E. 12th Street, Pompano Beach, Florida, 33060.

D. Delivery

Bidders are to state the number of calendar days after receipt of an order required for delivery. The City seeks a source of supply that will provide accurate and timely delivery. The awarded bidder must adhere to delivery schedules. If, in the opinion of the General Services Director, the successful bidder(s) fail at any time to meet the requirements herein, including the delivery requirements, then the contract may be cancelled upon written notice. See Section II - General Conditions, (6) "Delivery," and (10) "Default," for additional information.

E. Addenda

The issuance of a written addendum is the only official method whereby interpretation, clarification or additional information can be given. If any addenda are issued to this Bid solicitation the City will attempt to notify all known prospective Bidders, however, it shall be the responsibility of each Bidder, prior to submitting their bid, to contact the City Purchasing Office at (954) 786-4098 to determine if addenda were issued and to make such addenda a part of their Bid proposal.

F. Small Business Enterprise Program

The Pompano Beach City Commission has established a voluntary Small Business Enterprise (SBE) Program to encourage and foster the participation of Small Business Enterprises in the central procurement activities of the City. The City of Pompano Beach is strongly committed to ensuring the participation of Small Business Enterprises (SBE's) as contractors and subcontractors for the procurement of goods and services. The definition of a SBE, for the purpose of the City's voluntary program, is taken from the State of Florida Statute 288.703(1).

As of the date of publication of this solicitation, a small business means an independently owned and operated business concern that employs 200 or fewer permanent full-time employees and that, together with its affiliates, has a net worth of not more than \$5 million or any firm based in Florida that has a Small Business Administration 8(a) certification. As applicable to sole proprietorships, the \$5 million net worth requirement shall include both personal and business investments.

The City encourages all firms to undertake good faith efforts to identify appropriate Small Business Enterprise partners. Sources of information on certified Small Business Enterprises include the Broward County Small Business Development Division, the State of Florida Office of Supplier Diversity, South Florida Water Management District, and other agencies throughout the State. The City includes links to these organizations from the City's website www.mypompanobeach.org. Please indicate in your response if your firm is a certified Small Business Enterprise.

Please note that, while no voluntary goals have been established for this solicitation, the City encourages small business participation in *all* of its procurements.

G. Local Business Program

On March 23, 2010, the City Commission approved a Resolution establishing a Local Business Program, a policy to increase the participation of City of Pompano Beach businesses in the City's procurement process.

You can view the list of City businesses that have a current Business Tax Receipt on the City's website, and locate local firms that are available to perform the work required by the bid specifications. The business information, sorted by business use classification, is posted on the webpage for the Business Tax Receipt Division:

<http://mypompanobeach.org/directory/btr/index.html>

Please note that, while no voluntary goals have been established for this solicitation, the City encourages Local Business participation in *all* of its procurements.

H. Questions And Communication

All questions regarding the bid are to be submitted in writing to the Purchasing Office, 1190 N.E. 3rd Avenue, Building C (Front), Pompano Beach, Florida 33060, fax (954) 786-4168. All questions must include the inquiring firm's name, address, telephone number and Bid name and number. Questions must be received at least seven (7) calendar days before the scheduled bid opening. Oral and other interpretations or clarifications will be without legal effect. Questions and answers will be distributed to all firms known to have obtained the bid document from the City.

I. Insurance

Due to the required start-up services, the awarded vendor must provide the following insurance information. The contractor shall not commence operations, construction and/or installation of improvements pursuant to the terms of this agreement until certification or proof of insurance, detailing terms and provisions of coverage, has been received and approved by the City of Pompano Beach Risk Manager.

The following insurance coverage shall be required.

A. Worker's Compensation Insurance covering all employees and providing benefits as required by Florida Statute, Chapter 440, regardless of the size of the company (number of employees). The Contractor further agrees to be responsible for employment, control and conduct of its employees and for any injury sustained by such employees in the course of their employment.

B. Liability Insurance

- 1) Naming the City of Pompano Beach as an additional insured, on General Liability Insurance only, in connection with work being done under this contract.
- 2) Such Liability insurance shall include the following checked types of insurance and indicated minimum policy limits.

C. Real & Personal Property Insurance

The Contractor is responsible for any loss or damage to tools, equipment and supplies at the job site and is also responsible for any loss or damage to buildings being constructed until that building is completed and a certificate of occupancy is issued.

LIMITS OF LIABILITY

Type of Insurance	each occurrence	aggregate
GENERAL LIABILITY		
<i>MINIMUM \$1,000,000 OCCURRENCE/AGGREGATE</i>		
XX comprehensive form		
XX premises - operations	bodily injury	
— explosion & collapse		
— hazard	property damage	
— underground hazard		
XX products/completed		
— operations hazard	bodily injury and	
XX contractual insurance	property damage	
XX broad form property	combined	
— damage		
XX independent contractors		
XX personal injury	personal injury	

AUTOMOBILE LIABILITY		
<i>MINIMUM \$1,000,000 OCCURRENCE/AGGREGATE</i>		
	bodily injury	
	(each person)	
	bodily injury	
	(each accident)	
XX comprehensive form	property damage	
XX owned		
XX hired	bodily injury and	
XX non-owned	property damage	
	combined	

REAL & PERSONAL PROPERTY		
XX comprehensive form		Organization must show proof they have
this		coverage.

EXCESS LIABILITY		
— umbrella form	bodily injury and	
— other than umbrella	property damage	
	combined	
		\$2,000,000. \$2,000,000.

The certification or proof of insurance must contain a provision for notification to the City ten (10) days in advance of any material change in coverage or cancellation.

The successful bidder shall furnish to the City the certification or proof of insurance required by the provisions set forth above, within ten (10) days after notification of award

of contract. Certificate(s) to be issued to City of Pompano Beach, Attention Risk Manager, 100 West Atlantic Boulevard, Pompano Beach, Florida, 33060.

J. Detailed Specifications

Note: the drawing referenced herein can be found on the last page of this bid document.

1. GENERAL

1.1. Scope

The work under this section includes the furnishing of all labor, materials, equipment, documentation, training and startup services for the design, manufacture, and installation of skid mounted chemical metering systems suitable for the application of hydrofluosilicic acid (a.k.a. fluoride) as shown on the drawing and specified herein (the "Work").

1.2. Work Specified Herein

A. Equipment

1. Fluoride Metering Skid and Accessories
2. Fluoride Metering Pumps and Pump Controls
3. Spare Parts

B. Execution

1. Submittal
2. Fabrication/Manufacturing
3. Testing
4. Delivery/Documentation
5. Installation (to be performed by the City of Pompano Beach personnel)
6. Manufacturer Services

1.3. Quality Assurance

A. Acceptable Manufacturers

1. A single manufacturer, who shall demonstrate previous experience in the design and fabrication of skid-mounted chemical metering systems, shall provide the products of this section. The manufacturer must have a service

center with trained direct company employed technicians authorized to make repairs to all components of the chemical feed system located within the State of Florida. This supplier shall be responsible for providing all equipment, accessories, spare parts, documentation and installation supervision required for a complete and operational chemical feed system.

2. The pump skids shall be a regularly marketed product of the manufacturer who must have a physical plant, technical and design staff, and production personnel to complete the work as specified. Systems assembled by second party fabricators, integrators, equipment distributors/representatives, contractors or manufacturers not normally engaged in chemical metering skid design and manufacturing shall not be acceptable. The chemical metering skid(s) shall be assembled and tested by the manufacturer prior to delivery.
3. The design and fabrication of the chemical metering skids shall comply with the following criteria:
 - a. Systems shall be designed completely in 3D CAD prior to fabrication.
 - b. The metering skid shall be fabricated from white ½" PVC Type 1 sheet that is thermally welded resulting in a unitary piece of construction. Rotationally molded or skeletal frame skid construction is not acceptable.
 - c. The PVC sheet shall be precision cut on state of the art CNC equipment using information from the project specific CAD drawings for each system. Hand cut (non-CNC) sheet construction is not acceptable.
 - d. All piping shall be fabricated to CAD based production drawings that detail all pipe nipples, fittings, valves, metering accessories, clamp locations, etc. These drawings shall become a permanent part of the production file maintained by the manufacturer so that all or any portion of the piping can be pre-fabricated by the manufacturer and replaced in the field without any pipe cutting, gluing, welding etc. required. Hand built or reverse engineered piping assembly not based on CAD drawings is not acceptable.
 - e. All power and control wiring as indicated on the P&I drawings shall terminate in a NEMA 4X terminal junction box (TJB) providing the site electrical contractor with a single point termination for each system. Any devices installed within the metering skid boundary that require power or interface connection to remote systems shall be pre-wired to the TJB by the manufacturer.
 - f. The manufacturer shall hydraulically and electrically test each system prior to delivery. Testing shall be documented and include verification of pump performance and response to remote systems using simulation equipment as required. A copy of the shop test report shall be included in

the final O&M's for the project.

4. The manufacturer shall supply fifteen separate references with contact names and phone numbers, where substantially similar installations for the equipment as specified has been in satisfactory operation for a minimum of five years.
5. The manufacturer shall have a minimum of 5 years experience with a successful record of manufacturing and servicing of systems as specified herein.
6. The manufacturer shall have a proven track record of after market sales and service support on its equipment. A proposal for professional maintenance of the equipment by a factory technician shall be provided in the submittals.
7. The products of this section shall be manufactured by Blue Planet Environmental Systems, Inc. or approved equal.
8. Naming of a manufacturer does not indicate approval nor shall standard product offerings by any named manufacturers be accepted in lieu of component features as specified herein. All manufacturers are required to comply fully with these specifications.

B. Warranties

1. The system manufacturer shall provide a two (2) year warranty for the metering pumps (1-year for liquid end), skid material/construction, and skid-mounted equipment, piping and valves. This warranty shall be in addition to and not in lieu of any warranties provided by the manufacturer of the equipment itself.

1.4. Bid Submittals

- A. The following information shall be provided with the bid in order for the bid to be considered.
- B. Submit fifteen (15) separate references where similar chemical metering systems have been in successful operation for a minimum of 5 years.
- C. Submit a list of the manufacturers recommended spare parts, special tools and lubricants. List shall include local source for supply of all parts and professional service.
- D. Maintenance Proposal including:
 - Price for all P/M kits and parts required for normal service. Proposal shall be valid for 1 year.
 - Price for factory technician to perform normal preventive maintenance

including all normal parts, jobsite labor and travel charges. Proposal shall include schedule of services and shall be valid for 1 year.

- E. A checked and signed copy of the P&I drawing provided as a part of the bid package indicating full compliance. Markups or exceptions shall not be considered.
- F. Submit a copy of proposed manufacturer's warranty.

1.5. Submittals

- A. The information requested in this section is required in order to determine that the manufacturer has the ability and resources to provide equipment that meets the design, fabrication and quality standards as set forth herein. Any submittals that do not include this information shall be returned as "Rejected - Do Not Resubmit".
- B. The following CAD drawings shall be provided as a part of the submittal package in a section labeled SHOP DRAWINGS for each chemical metering system included in this section. These drawings shall be produced "in-house" by the system manufacturer for the specific equipment to be provided for this project. Marked up copies of general product information is not acceptable.

1. P&I Diagram – The PID shall indicate the following:

- a. All process piping, valves, pumps and accessories installed within the skid boundary including pipe sizes, materials and piping inlet and outlet information.
- b. All skid mounted electrical/instrumentation switches, controls, indicators etc. including voltage and current ratings for any devices that require a power source.
- c. All controls, indicators, inputs, outputs and surge protection devices included in the local skid mounted NEMA 4X terminal junction box.
- d. All controls, indicators, inputs, outputs and surge protection devices included for any remote mounted control or interface panels being provided.
- e. A copy of the P&I drawing that is provided as a part of this bid package is not acceptable, the P&I drawing for the post bid submittal must be developed by the system manufacturer.

2. Detail Layout Drawing – The detail drawings shall include the following:

- a. Top, front, side and isometric views for the proposed metering systems.
- b. Top, front and side views shall include accurate overall dimensions and

location and dimensions for all piping connections.

- c. Isometric view shall include callouts indicating all skid mounted components and piping connections.
 - d. A table shall be provided with the quantity, part number, description, P/M kit (if applicable) and recommended maintenance interval for all major equipment items and metering accessories.
3. Terminal box drawing – The terminal box drawings shall include:
- a. Detail drawing of terminal box back panel layout including all panel mounted components terminals, etc. including details for all field connections.
 - b. The back panel drawing shall include a table with quantity, part numbers and descriptions for all devices.
 - c. Detail drawing of terminal box door layout including all panel-mounted components (lamps, switches, nameplates, etc.).
 - d. The front panel drawing shall include a table with quantity, part numbers and descriptions for all devices.
4. Remote control/interface panel drawings (if required) including:
- a. Detail drawing of back panel layout including all panel mounted components terminals, etc. including details for all field and skid connections.
 - b. The back panel drawing shall include a table with quantity, part numbers and descriptions for all devices.
 - c. Detail drawing of panel door layout including all panel-mounted components (lamps, switches, nameplates, etc.).
 - d. The panel door drawing shall include a table with quantity, part numbers and descriptions for all devices.
- C. The following information shall be provided as a part of the submittal package in a section labeled DOCUMENTATION, SPARE PARTS AND SERVICE.
1. Proposed manufacturer’s warranty.
 2. Factory Certificates
 - a. Copy of manufacturers in-house and field testing certificates.

- b. Copy of manufacturers installation inspection certificate.
- 3. Spare Parts and Maintenance
 - a. Spare Parts List including:
 - Contact information for manufacturer.
 - Contact information for local service and support.
 - Table of spare parts provided as per specifications.
 - Information for any required lubricants.
 - b. Maintenance Proposal including:
 - Price for all P/M kits and parts required for normal service. Proposal shall be valid for 1 year.
 - Price for factory technician to perform normal preventive maintenance including all normal parts, jobsite labor and travel charges. Proposal shall include schedule of services and shall be valid for 1 year.
- D. Catalog cut and data sheets for all skid mounted equipment, piping, valves, etc. Information shall be clearly marked up to indicate the specific equipment that is being offered for consideration.
- E. In addition to hard copies as required, a copy of the final and complete approved submittal shall be provided in PDF electronic format with bookmarks and index for easy navigation.

1.6. Service Conditions

- 1. This project includes chemical metering systems designed for the following chemicals:
 - a. Hydrofluosilicic Acid
 - Common Name: Fluoride
 - Concentration: 23%
 - Specific Gravity: 1.23
 - Temperature: 100 Deg Max.

2. EQUIPMENT

2.1. General

- A. The chemical metering system(s) shall be completely self-contained and designed to safely feed metered amounts of all chemicals as listed under Section 1.6 Service Conditions.
- B. Each chemical metering skid shall include chemical metering pumps, accessories, controls and options as indicated in the Table at the end of this section.
- C. The chemical metering skids will be completely assembled and tested under simulated field conditions using water prior to delivery to the job site. Manufacturer shall provide 2 weeks notice prior to testing of the system(s) to allow the engineer/owner to make arrangements to witness the testing if desired.

2.2. Chemical Metering Skids

A. Chemical Metering Skids General Description

- 1. The chemical metering skids shall be constructed from white PVC sheet with a minimum trade thickness of 1/2". The design of the skid shall include gussets and supports as required for all components and shall be self-supporting. All components of the chemical metering system shall be contained within the skid boundary. The skid shall incorporate spill containment capability and feature a 1/2" fpt connection for containment drain piping. The skid(s) shall be manufactured using continuous thermal welding technology; rotationally molded, skeletal frame, and bolted construction is not acceptable. Pedestals fabricated by the same method shall be provided to elevate the metering pumps above the skid base. The pedestals shall be bolted to the skid base with non-metallic bolts to allow for future pump/piping modifications.
- 2. For operator protection, the pump skid shall be enclosed on the top and sides with white PVC sheet with a minimum trade thickness of 1/2". The enclosure shall include gussets and supports as required for all components and shall be self-supporting. All components of the chemical metering system shall be contained within the enclosure with the exception of the NEMA 4X panel, which shall be attached to the outside. The enclosure shall provide adequate ventilation to reduce heat build up. The enclosure shall include easy access doors with replaceable windows.
- 3. The system piping shall include the following at a minimum:
 - a. (1) In-line strainer for each metering pump. Strainer shall be located such that all media must pass through the strainer before entering the pump (e.g. supply tank, flushing valve, calibration column, etc.). Common strainers located in the main inlet piping are not acceptable.
 - b. (1) Pressure relief valve for each metering pump. The outlet of the

pressure relief valve shall return to the suction of the associated metering pump.

- c. (1) Pulsation dampener for each metering pump. The pulsation dampener shall be sized for a minimum of 95% dampening and shall be located as close to the metering pump discharge check valve as possible.
 - d. (1) Diaphragm protected pressure gauge for each metering pump. The gauge shall be located such that it may be used to indicate the setting for both the pressure relief valve and the back pressure valve.
 - e. (1) Back-pressure/Anti-siphon valve for each metering pump. Systems with multiple pumps sharing a common back pressure/anti-siphon valve are not acceptable.
 - f. (1) Suction drain/flush valve for each metering pump. The suction drain/flush valve shall be designed for independent use such that all other pumps in the system can remain in service while other pumps are being drained or flushed.
 - g. (1) Discharge drain/flush valve for each metering pump. The discharge drain/flush valve shall be designed for independent use such that all other pumps in the system can remain in service while other pumps are being drained or flushed.
 - h. (1) Calibration column shall be provided and designed for independent use with any of the metering pumps such that any metering pump can be calibrated while all other pumps remain in service.
4. The pump connections shall be designed with replaceable pipe sections on the suction and discharge via union or flange so that pump service, replacement or upgrade can be accomplished without cutting into skid piping or re-making of any joints.
 5. The piping shall be attached to the chemical metering skid with a non-metallic corrosion resistant support system. All support channels shall be welded to the skid, bolted supports are not acceptable. The straps shall be removable and reusable to allow for servicing of the system. All inlet/outlet connections, valves and pump accessories shall be clearly labeled on the skid for easy identification.

B. NEMA 4X Terminal Junction Box (TJB)

1. A NEMA 4X FRP terminal junction box (TJB) shall be provided on the skid back panel for single point termination of all power and control wiring.
2. The inside cover of the TJB shall include a wiring diagram detailing the

function of all terminals.

3. A power outlet with weatherproof cover shall be provided for any metering pumps or accessories that require an outlet. The outlet shall be powered from the protected side of a heavy duty AC surge arrestor located in the TJB using 12 gauge wiring in non-metallic flexible conduit.
 4. All metering pump or device control cables shall be neatly run to the TJB using NEMA 4X rated cable grips for entry into the TJB. Any metering pump or device with multiple cables shall have all cables neatly bundled in a common protective nylon/polyester over braid. Sufficient slack shall be left on the device end to facilitate equipment inspection or removal.
 5. A main breaker or power disconnect switch shall be provided in the TJB to isolate all skid mounted equipment from the incoming power supply.
 6. Surge protection shall be provided locally in the skid mounted TJB. Protection shall be provided for the main power supply as well as all analog input and output signals. Surge protection devices shall be as manufactured by EDCO Inc. of Florida.
 7. The NEMA 4X TJB shall provide the following I/O at a minimum:
 - a. Terminals for 120VAC power input (local heavy duty surge protection included).
 - b. 15A Breaker for Main AC Power.
 - c. HOA Selector Switch for each pump.
 - d. DI = Remote On/Off for each pump.
 - e. AI = Remote Speed Reference for each pump (local surge protection included)
 - f. AO = Speed Feedback for each pump (local surge protection included)
 - g. DO = Remote Status for each pump
 - h. DO = Fault Status for each pump
- C. The chemical metering skid(s) shall be completely assembled and tested by the manufacturer prior to delivery to the job site.
- D. Accessories
1. Calibration Columns

- a. A clear calibration column shall be provided in the chemical supply piping of each system. The piping shall be designed for the calibration column to be used independently with any of the metering pumps such that any pump can be calibrated while all other pumps remain in active service. The top of the calibration column shall allow for connection to rigid piping for “vent” return to the supply container or common chemical vent header. All materials shall be compatible with chemicals as listed under Service Conditions and Table <SECTION #>.
2. Pressure Relief Valves
 - a. Pressure relief valves shall be provided in the discharge piping of each metering pump, prior to any valves, to eliminate the buildup of excess pressure in the system. The pressure relief valves shall be fully adjustable from 5 – 150 psi with bodies compatible with chemicals as listed under Section 1.6 Service Conditions and the Table at the end of this specification. The pressure relief valve shall have a Teflon diaphragm and have no metal parts in contact with the chemical. Output of the pressure relief valves shall return to the associated pump suction pipe.
3. Pulsation Dampeners
 - a. Gas charged pulsation dampeners shall be provided and sized for a minimum of 95% dampening. Pulsation dampeners shall include gas charge fitting and 316SS pressure gauge. The dampeners shall be installed in the discharge piping of each metering pump, as close to the metering pump discharge check valve as possible. Pulsation dampeners larger than 10 cu. in. shall attach to the piping by ANSI 150# flanges with 316 SS bolts, threaded connections are not acceptable. All materials shall be compatible with chemicals as listed under Section 1.6 Service Conditions and the Table at the end of this specification.
4. Diaphragm Protected Pressure Gauges
 - a. 2-1/2” liquid filled pressure gauges with isolators shall be provided for indication of system pressure in the discharge piping of each metering pump. Industrial quality all 316 Stainless Steel gauges (case, tube, and stem) shall be utilized. The isolators shall have housings compatible with chemicals as listed under Section 1.6 Service Conditions and the Table at the end of this specification. Isolators shall include a Teflon diaphragm and suitable liquid fill. The isolator process connection shall feature an SS reinforcement ring not in contact with the chemical. A fabricated PVC bracket shall be provided for each pressure gauge to secure the isolator and prevent lateral movement of the pressure gauge.
5. Back Pressure/Anti-Siphon Valves

- a. Back pressure/anti-siphon valves shall be provided in the discharge piping of each metering pump to provide constant back pressure at the chemical metering pump discharge and eliminate siphoning. The back pressure valves shall be fully adjustable from 5 – 150 psi with bodies compatible with chemicals as listed under Section 1.6 Service Conditions and the Table at the end of this specification. The back pressure/anti-siphon valves shall have a Teflon diaphragm and have no metal parts in contact with the chemical.

E. Optional Accessories

1. Chemical Injection/Diffuser Assembly (CID)

- a. When indicated under optional accessories on the Table at the end of this specification, a chemical injection/diffuser assembly (CID) shall be provided. The CID shall be provided by the skid manufacturer.
- b. The CID shall include a standard corporation cock or ball valve with NPT process connection and plastic chemical diffuser pipe with PFA inner liner.
- c. For the chemical connection, a ball valve of the same material as the system piping and a diaphragm check valve shall be included with the assembly.
- d. The design of the CID shall allow for removal/insertion while the line is under pressure. A safety chain and securing mechanism shall be provided and adjusted so that the corporation cock can be operated prior to removing/installing the injection/diffuser portion.
- e. Injection/diffuser materials shall be the same as skid piping materials.

F. Piping

1. Polyvinylchloride (PVC) and Chlorinated Polyvinylchloride (CPVC)

- a. This specification covers pipe and fittings for pressurized pipe systems manufactured of Rigid Poly (Vinylchloride) (PVC) and Chlorinated Poly (Vinylchloride) (CPVC) material as described below. Fittings covered under this specification include heavy-duty Schedule 80 fittings molded of the material described below. Fittings covered under this specification are tees, elbows, couplings, reducer bushings, crosses, adapters, plugs, caps and flanges.
- b. All pipe and fittings shall bear the company's name or trademark, material designation, size, applicable IPS schedule, and the NSF mark as indicative of compliance with this specification.

- c. All fittings shall be injection molded of PVC fitting compound of cell classification 12454-B and of CPVC fitting compound of cell classification 23447-B as described in ASTM D- 1784 Standard Specification for Rigid Poly (Vinylchloride) Compounds and Chlorinated Poly (Vinylchloride) Compounds.
- d. All material used in pipe and fittings for potable water supply shall be listed for such applications by National Sanitation Foundation Laboratories, Inc. (NSF). Workmanship shall be in accordance with good commercial practice. Fittings shall be homogeneous throughout and free from visible cracks, holes, foreign inclusions or other injurious defects. The fittings shall be commercially uniform in color, opacity, density and other physical properties.
- e. All molded threads, internal or external, shall be “blunt start” threads. All threads shall conform to thread standard ANSI/ASME B1 .20.1 for tapered pipe threads. Threads shall measure not more than 1 1/2 threads large or small when checked with a plug gauge or ring gauge.
- f. Dimensions and tolerances of sockets shall conform to PVC IPS Schedule 40/80 Socket Dimensions. All reducer bushings shall be designed so as to provide for a positive and sufficient grip for cementing bushings in place. 4.3.2 Waterways shall be smooth and commercially free of flash and irregularities. On tees and 90° elbows, bond lines shall not coincide with the maximum stress area (crotch).
- g. Assembly shall be performed in a controlled shop environment by the skid manufacturer. All pipe shall be squarely cut on precision equipment with the ends chamfered and de-burred. All socket welded connections shall follow the guidelines set by the pipe/fitting manufacturer for proper cleaning, priming and gluing procedures. A heavy bodied solvent suitable for use with all chemicals as listed under section 1.7 Service Conditions and Table <SECTION #> shall be used. All threaded connections will utilize Teflon tape, a suitable thread sealant or a combination of both. Threaded connections shall utilize stainless steel reinforcement rings where applicable to reduce the risk of cracking.

G. Valves – The valves for each system shall be as indicated in Table <SECTION #>.

1. Type 21 Ball Valve

- a. All TYPE 21 Ball Valves, sizes 1/2” to 4”, shall be of true union design with two-way blocking capability. All O-rings shall be EPDM or FKM with PTFE seats. PTFE seats shall have elastomeric backing cushion of the same material as the valve seals. Stem shall have double O-rings and be of blowout-proof design. The valve handle shall double as carrier

removal and/or tightening tool. ISO mounting pad shall be integrally molded to valve body for actuation. The ball valves shall have a pressure rating of 230 psi for sizes 1/2" to 3" and 150 psi for 4" at 70 ° F. Type 21 Ball Valves must carry a two-year guarantee, as manufactured by Asahi/America, Inc.

2.3. Chemical Metering Pumps

1. The chemical metering pump(s) shall be a simplex, motor-driven, reciprocating, mechanically-actuated diaphragm type. The pump shall include integral motor, grease lubricated gear reducer and cam-and-spring drive mounted in an aluminum housing, such housing to be sealed into an outer plastic housing for corrosion protection with heat sink fins for cooling.
2. The chemical metering pump manufacturer shall provide a two-year warranty on the pump drive and one year warranty on the pump liquid end, including diaphragm and O-rings.
3. The pump shall be fully tested to meet rated flow and pressure by the manufacturer.
4. The power supply shall be 120 VAC, 60 Hz, 1 phase.
5. The liquid end shall be physically separated from the drive unit by back plate with weep hole creating an air gap. An elastomer shaft wiper seal shall prevent contamination of the gearbox if the primary diaphragm fails. The diaphragm shall be nylon-reinforced EPDM with PTFE-faced fluid contact surface.
6. The diaphragm shall be of a convex design fitting into a concave liquid end to minimize dead volume and promote flow of solids in suspension.
7. The liquid end shall be virgin PVDF. The suction and discharge valve shall be PVDF with PTFE faced Viton® gasket seals and ceramic valve balls.
8. Stroke length control shall be manually adjusted between 100% and 0% with a stroke adjustment knob on the pump face control.
9. Programming shall allow pump to be calibrated so as to display pump output in gallons/hour or liters/hour.
10. The pump shall be equipped with the programmable function of electronic interlocking of the keypad by access code to prevent unauthorized adjustments to the pump.
11. Keypad shall allow for scrolling and display on LCD such parameters as stroke frequency, stroke counter, pump output in gals/hr or L/hr, and indication of external mode.

12. Stroke frequency control shall be manually adjusted by touch keypads, with the set stroke rate displayed on the LCD. The metering pump shall be capable of receiving a pulse input via optional external control cable such that one pulse gives one pump stroke rate. The pump shall be capable of remote ON-OFF operation using the pause function via a voltage free contact relay through an optional control cable.
13. The pump shall accept an analog signal such that stroke frequency is proportional to 0/4-20mA or 20-4/0mA, the choice of which is programmable at the pump. The pump shall allow the setting of a maximum stroke rate, which corresponds to the maximum analog signal, with stroke rate proportional to signal strength below that rate. Programming for curve processing shall also be possible, in which any stroke frequency ratio in proportion to the electrical signal can be configured. Analog to digital converters external to the pump shall not be allowed.
14. The metering pump shall provide a 4-20mA output signal that is proportional to motor speed x stroke length for remote monitoring of inferred flow rate.
15. The metering pump shall have an integral relay to allow remote annunciation of a fault condition.
16. The chemical metering pumps shall be Prominent Signal Series.

2.4. Metering Pump Controls

- A. The chemical metering pumps shall feature an internal microprocessor as described in the Chemical Metering Pump section.

2.5. Spare Parts

A. Spare Parts

1. Provide the following spare parts to the OWNER for each chemical metering skid upon delivery of the pump skid. Spare parts shall include all parts required for (2) years of normal maintenance of all components of the chemical metering system. All parts shall be in one box labeled with the Skid ID Information:
 - a. (1) maintenance kits for each chemical metering pump. Maintenance kits shall include but not be limited to diaphragm, check valve seats, gaskets and o-rings.
 - b. (1) Maintenance kits for each pressure relief valve for each pump skid.
 - c. (1) Maintenance kit for each back pressure valve for each pump skid.
 - d. (1) Spare bladder for each pulsation dampener for each pump skid.

- e. (1) Spare valve of each size for each pump skid.
- f. (1) Parts list for all serviceable components.

3. EXECUTION

3.1. Installation

- A. Installation shall be provided by the City of Pompano Beach. The system manufacturer shall provide all required documentation and guidance required for proper installation.

3.2. Inspection and Testing

- A. Upon completion of installation, a full operating test shall be performed in the presence of the Engineer/Owner by a qualified direct company employed manufacturer's representative. The manufacturer shall correct any deficiencies noted.

3.3. Manufacturer's Services

- A. The manufacturer shall provide the following services as specified.

1. Delivery

- a. Delivery shall be by the manufacturer's own personnel and delivery vehicle. The delivery person shall be capable of giving the installers guidance on the installation of the system. For any manufacturers not capable of delivery by their own personnel, an authorized representative must be present during delivery to inspect the equipment and offer guidance on the installation.

2. Mechanical Start-Up Services

- a. Provide 1/2 (4-hour) working days of mechanical start-up services.

3. Process Start-Up Services

- a. Provide 1/2 (4-hour) working days of process start-up services.

4. Operator Training Services

- a. Provide (1) 8-hour working day to instruct operating personnel on the operation and maintenance of the system.

3.4. Operation & Maintenance Manuals and Production Records

- A. Operating and maintenance manuals prepared specifically for this project shall be

provided. Manuals shall include all procedures, drawings, parts lists, etc. required to instruct personnel unfamiliar with such equipment. Operation and maintenance manuals shall be prepared in accordance with all specifications of this project.

1. Complete operating and maintenance manuals shall be provided in PDF electronic format with bookmarks and index for easy navigation.
 2. Operating and maintenance manuals shall include a copy of in-house testing certificate.
- B. Operating and maintenance manuals shall be prepared after final approval of the post bid submittals and be provided no later than with delivery of the equipment.
- C. A detailed database shall be maintained by the manufacturer containing production data for each chemical metering system. The database shall include serial numbers for all serialized components, production drawings, test data, ship dates, start-up dates and all relevant information.

3.5. Warranties

- A. The system manufacturer shall provide a two (2) year warranty for the metering pumps (1-year liquid end), skid material/construction, and skid-mounted equipment, piping and valves. This warranty shall be in addition to and not in lieu of any warranties provided by the manufacturer of the equipment itself.

The system manufacturer shall pass through any warranties from the equipment suppliers for the pumps, controllers, and other system components manufactured by other

Table

<u>Skid Number</u>	#1
<u>Location</u>	Indoor
<u># Pumps</u>	3
<u>Chemical</u>	Fluoride
<u>Type Pump</u>	Prominent Sigma1
<u>Model</u>	10050PVT
<u>Motor Horsepower</u>	1/8 HP
<u>Liquid End Mtls.</u>	PVDF/PTFE
<u>Stroke Length Control</u>	Manual
<u>Stroke Rate Control</u>	Manual or 4-20 mA
<u>Pump Capacity (GPH)</u>	13.2
<u>Pump Pressure (PSI)</u>	145
<u>Piping Material</u>	SCH-80 PVC/Viton
<u>Type Valves</u>	Ball Valves
<u>Skid Piping Outputs</u>	3 2 for service, one spare
<u>Optional Accessories</u>	(2) CID Splash Protection

SECTION II - GENERAL CONDITIONS

- 1. Submission and Receipt of Bids
 - 1.1. Bidders must use the form furnished by the City.
 - 1.2. Bids having any erasures or corrections must be initialed by the bidder in ink. Bid shall be typewritten or filled in with pen and ink. Manual signature must be in ink.
 - 1.3. It will be the sole responsibility of the bidder to have their bid delivered to the Purchasing office before the closing hour and date shown for receipt of bids.
 - 1.4. Bid envelopes are provided with the bid forms. Your bid should be returned in the envelope (with the correct postage affixed if the bid is mailed) and should show the following information:
 - 1.4.1. Your return mailing address in the upper left-hand corner.
 - 1.4.2. Bid Number - write or type the bid number that appears on the first page of the bid form on the line for it on the front of the envelope.
 - 1.4.3. Bid Items - write or type the title of the bid on line "Sealed bid for: _____".
 - 1.5. If not using the City-provided envelope to mail your bid, or if using a delivery service other than the U.S. Post Office, use the following address:

City of Pompano Beach
 Purchasing Division
 1190 N.E. 3rd Avenue, Building C
 Pompano Beach, FL 33060
 - 1.6. Late bids will not be considered and will be returned unopened.
 - 1.7. Bids transmitted by facsimile will not be accepted.
- 2. Completion of Bid Forms

Bidder is to fill in all of the blank spaces on the bid forms and return all numbered pages. Bidder should initial each page at the bottom to indicate he has read and understands the provisions contained on that page.
- 3. Signature Required

All bids must show the company name and be signed by a company officer or employee who has the authority to bind the company or firm by their signature. **UNSIGNED BIDS WILL BE REJECTED.** All manual signatures must be original - no rubber stamp, photocopy, etc.

- 4. Prices to be Firm

Bidder certifies that prices, terms and conditions in the bid will be firm for acceptance for a period of ninety (90) days from the date of bid opening unless otherwise stated by the City. Bids may not be withdrawn before the expiration of ninety (90) days. Prices shall be firm, with no escalator clauses unless specified by the City. Bids may be withdrawn after ninety (90) days only upon written notification to the City.
- 5. Extensions

If there is an error in extensions (mathematical calculations), unit prices will prevail.
- 6. Delivery
 - 6.1. All items are to be bid F.O.B. delivered with freight charges prepaid and included, to designated addresses as specified by the City on its purchase order(s) or in letter(s) of authorization.
 - 6.2. Bidder must state specific number of calendar days required for delivery of each item bid in appropriate space on the bid pages for consideration of award of this bid.
 - 6.3. Delivery time will be a factor for any orders placed as a result of this bid. The City reserves the right to cancel such order(s) or any part thereof, without obligation, if delivery is not made within the time(s) specified herein and hold the vendor in default. (See Section 10.)
- 7. Signed Bid Considered an Offer

This signed bid is considered an offer on the part of the bidder, which offer shall be considered accepted upon approval by the City Commission of the City of Pompano Beach (if required). The City of Pompano Beach will issue a purchase order or a letter of authorization to the successful bidder, as authorization for delivery of the items awarded subject to requirements of detailed specifications and those contained herein.

In the event of default on the part of the bidder after such acceptance, the City may take such action as it deems appropriate including legal action for damages or specific performance.
- 8. Quality

All materials used for the manufacture or construction of any supplies, materials or equipment covered by this bid shall be new. The items bid must be new, the latest model, of the best quality and highest grade workmanship unless otherwise specified in this bid by the City.

9. **Brand Names**
- Whenever proprietary names are used, (whether or not followed by the words "or approved equal"), the item(s) will be subject to acceptance and/or approval by authorized City personnel, and said personnel will deem it their prerogative to select the item(s) which are lowest bid, item by item, meeting specifications from the information furnished by the bidder with the bid and/or sample inspection or testing of the item(s) called for herein.
10. **Default Provisions**
- In the event of default by the bidder, the City reserves the right to procure the item(s) bid from other sources and will hold the bidder responsible for excess costs incurred as a result. A contractor who defaults on a City contract may be banned from doing business with the City for a period of 36 months from the date of default.
11. **Samples**
- Samples, when requested, must be furnished at, or before, bid opening, (unless otherwise specified), and will be delivered at no charge to the City. If not used and/or destroyed in testing, said sample(s) will, at bidder's request, be returned within thirty (30) days of bid award at bidder's expense. If requested by the City, samples and/or inspection of like items are to be made available in the southeast Florida area.
12. **Acceptance of Materials**
- The material delivered as a result of this bid shall remain the property of the seller until a physical inspection and actual usage of the item(s) is made and thereafter deemed acceptable to the satisfaction of the City, in compliance with the terms and specifications contained herein. In the event that the item(s) supplied to the City is/are found to be defective, or does/do not conform to specifications, the City reserves the right to cancel the order upon written notice to the seller and return the item(s) to the seller at the seller's expense.
13. **Manufacturers' Certifications**
- The City reserves the right to obtain separate manufacturer certification of all statements made in the bid.
14. **Copyrights and Patent Rights**
- Bidder warrants that there has been no violation of copyrights or patent rights in manufacturing, producing and/or selling the item(s) ordered or shipped as a result of this bid, and successful bidder agrees to hold the City harmless from any and all liability, loss or expense by any such violation.
15. **Laws and Regulations**
- All applicable laws and regulations of the Federal government, the State of Florida, and ordinances of the City of Pompano Beach will apply to any resulting bid award.

16. **Taxes**
- The City of Pompano Beach is exempt from any taxes imposed by the State and Federal government. Exemption certificates will be provided upon request. State sales tax exemption certificate #16-08-196489-54C and Federal exemption tax #59-74-0083K apply and appear on each purchase order.
17. **Conflict of Instructions**
- If a conflict exists between the General Conditions and instructions contained herein, and the Specific Conditions and instructions contained herein, the specifics shall govern.
18. **Exceptions to Specifications**
- For purposes of evaluation, bidder must indicate any exception to the specifications, terms, and/or conditions, no matter how minor. This includes any agreement or contract forms supplied by the bidder that are required to be signed by the City. If exceptions are not stated by the bidder, in his bid, it will be understood that the item(s)/services fully comply with the specifications, terms and/or conditions stated by the City. Exceptions are to be listed by the bidder on an attachment included with his bid. The City will not determine exceptions based on a review of any attached sales or manufacturer's literature.
19. **Warranties**
- The City of Pompano Beach will not accept any disclaimer of the warranties of merchantability and fitness for a particular purpose for the product(s) offered. Proposals will clearly state any additional warranties and guarantees against defective materials and workmanship. A copy of the complete manufacturer's warranty statement is to be submitted with the bid.
20. **Retention of Records and Right to Access Clause**
- The successful bidder shall preserve and make available all financial records, supporting documents, statistical records, and any other documents pertinent to this contract for a period of five (5) years after termination of this contract; or if an audit has been initiated and audit findings have not been resolved at the end of these five (5) years, the records shall be retained until resolution of audit finding.
21. **Facilities**
- The City reserves the right to inspect the bidder's facilities at any time, without prior notice.
22. **Anti-collusion Statement**
- By submitting this bid, the bidder affirms that this bid is without previous understanding, agreement, or connection with any person, business, or corporation submitting a bid for the same materials, supplies, or equipment, and that this bid is in all respects fair, and without collusion or fraud.

- Additionally, bidder agrees to abide by all conditions of this bid and certifies that they are authorized to sign this bid for the bidder. In submitting a bid to the City of Pompano Beach, the bidder offers and agrees that if the bid is accepted, the bidder will convey, sell, assign or transfer to the City of Pompano Beach all rights, title and interest in and to all causes of action it may now or hereafter acquire under the Anti-trust laws of the United States and the State of Florida for price fixing relating to the particular commodities or services purchased or acquired by the City of Pompano Beach. At the City's discretion, such assignment shall be made and become effective at the time the City tenders final payment to the bidder.
23. Indemnification
- Contractor covenants and agrees that it will indemnify and hold harmless the City and all of the City's officers, agents, and employees from any claim, loss, damage, costs, charge or expense arising out of any act, action, neglect or omission by contractor during the performance of the contract, whether direct, or indirect, and whether to any person or property to which the City of said parties may be subject, except that neither the contractor nor any of its sub-contractors will be liable under this section for damages arising out of injury or damage to persons or property directly caused or resulting from the sole negligence of City or any of its officers, agents, or employees.
24. Reservation for Rejections and Award
- The City reserves the right to accept or reject any or all bids or parts of bids, to waive irregularities and technicalities, and to request re-bids. The City also reserves the right to award the contract on such items the City deems will best serve the interests of the City. The City further reserves the right to award the contract on a "split order" basis, or such combination as shall best serve the interests of the City unless otherwise specified.
25. Interpretations
- Any questions concerning the conditions and specifications contained in this bid should be submitted in writing and received by the Purchasing Division no later than five (5) working days prior to the bid opening. The City of Pompano Beach shall not be responsible for oral interpretations given by any City personnel or representative or others. The issuance of a written addendum is the only official method whereby interpretation, clarification or additional information can be given.
26. Failure to Respond
- If you elect not to bid, please return enclosed "Statement of No Response" form by the bid due date, and state your reason(s) for not bidding. Failure to respond, either by submitting a bid, or by submitting a "Statement of No Response" form, may result in your name being removed from our mailing list.

27. Bid Tabulations
- Bidders who wish to receive a copy of the bid tabulation should request it by enclosing a stamped, self-addressed envelope with their bid, or by requesting a tabulation be sent to their fax machine. Bid results will not be given out by telephone. The City does not notify unsuccessful bidders of contract awards.
28. Assignment
- Successful bidder may not assign or transfer this contract, in whole or part, without prior written approval of the City of Pompano Beach.
29. Termination for Convenience of City
- Upon seven (7) calendar days written notice delivered by certified mail, return receipt requested, to the successful bidder, the City may without cause and without prejudice to any other right or remedy, terminate the agreement for the City's convenience whenever the City determines that such termination is in the best interest of the City. Where the agreement is terminated for the convenience of the City the notice of termination to the successful bidder must state that the contract is being terminated for the convenience of the City under the termination clause and the extent of the termination. Upon receipt of such notice, the contractor shall promptly discontinue all work at the time and to the extent indicated on the notice of termination, terminate all outstanding sub-contractors and purchase orders to the extent that they relate to the terminated portion of the contract and refrain from placing further orders and subcontracts except as they may be necessary, and complete any continued portions of the work.
30. Public Entity Crimes
- In accordance with Florida State Statute 287.133 (2)(a): A person or affiliate who has been placed on the convicted vendor list following a conviction for a public entity crime may not submit a bid on a contract to provide any goods or services to a public entity, may not submit a bid on a contract with a public entity for the construction or repair of a public building or public work, may not submit bids on leases of real property to a public entity, may not be awarded or perform work as a contractor, supplier, subcontractor or consultant under a contract with any public entity, and may not transact business with any public entity in excess of the threshold amount provided s. 287.017 for CATEGORY TWO for a period of 36 months from the date of being placed on the convicted vendor list.
31. Governing Procedures
- This bid is governed by the applicable sections of the City's General Services Procedures Manual. A copy of the manual is available for review at the City Purchasing office.
32. Identical Tie Bids
- In accordance with Section 287.087, State of Florida Statutes, preference shall be given to businesses with Drug-free Workplace Programs. Whenever two or

more bids which are equal with respect to price, quality, and service are received for the procurement of commodities or contractual service, a bid received from a business that certifies that it has implemented a Drug-free Workplace Program shall be given preference in the award process.

Established procedures for processing tie bids will be followed if none of the tied vendors have a Drug-free Workplace Program. In order to have a Drug-free Workplace Program, a business shall:

- 1) Publish a statement notifying employees that the unlawful manufacture, distribution, dispensing, possession, or use of a controlled substance is prohibited in the workplace and specifying the actions that will be taken against employees for violations of such prohibition.
- 2) Inform employees about the dangers of drug abuse in the workplace, the business's policy of maintaining a drug-free workplace, any available drug counseling, rehabilitation, and employee assistance programs, and the penalties that may be imposed upon employees for drug abuse violations.
- 3) Give each employee engaged in providing the commodities or contractual services that are under bid a copy of the statement specified in subsection (1).
- 4) In the statement specified in subsection (1), notify the employees that, as a condition of working on the commodities or contractual services that are under bid, the employee will abide by the terms of the statement and will notify the employer of any conviction of, or plea of guilty or nolo contendere to, any violation of Chapter 893 or of any controlled substance law of the United States of any State, for a violation occurring in the workplace no later than five (5) days after such conviction.
- 5) Impose a sanction on, or require the satisfactory participation in a drug abuse assistance or rehabilitation program if such is available in the employee's community, by any employee who is so convicted.
- 6) Make a good faith effort to continue to maintain a drug-free workplace through implementation of this section.

33. Invoicing/Payment

All invoices should be sent to City of Pompano Beach, Accounts Payable, P.O. Drawer 1300, Pompano Beach, Florida, 33061. In accordance with Florida Statutes, Chapter 218, payment will be made within 45 days after receipt of merchandise and a proper invoice. The City will attempt to pay within fewer days if bidder offers a payment discount. The City cannot make advance payments, make deposits in advance of receipt of goods, or pay C.O.D. Bidders should state any payment discount in space provided on Proposal form.

34. Optional Contract Usage

As provided in Section 287.042(17), Florida Statutes, State of Florida agencies may purchase from a contract resulting from this solicitation, provided the Department of Management Services, Division of Purchasing, has certified its use to be cost effective and in the best interest of the State. Contractor(s) may sell such commodities or services certified by the Division to State of Florida agencies at the contractor's option.

35. Non Discrimination

There shall be no discrimination as to race, color, religion, gender, national origin, ancestry, and physical or mental disability in the operations conducted under this contract. Included as applicable activities by the contractor under this section are the solicitation for, or purchase of, goods or services, or the subcontracting of work in performance of this contract.

36. Notice To Contractor

The employment of unauthorized aliens by any contractor is considered a violation of Section 274A(e) of the Immigration and Nationality Act. If the contractor knowingly employs unauthorized aliens, such violation shall be cause for unilateral cancellation of the contract.

SECTION III - PROPOSAL

IMPORTANT!!!

**BID MUST BE SIGNED TO BE CONSIDERED FOR AWARD
PER GENERAL CONDITIONS SECTION 3**

Furnish and deliver fluoride metering skid system and all deliverables, and all after delivery services, as specified herein:

\$_____ /lump sum

Delivery time after receipt of order _____ calendar days.

Conflict of Interest: For purposes of determining any possible conflict of interest, all bidders must disclose if any City of Pompano Beach employee is also an owner, corporate officer, or employee of their business. Indicate either "Yes" (a City employee is also associated with your business), or "No". If yes, give person(s) name(s) and position(s) with your business. (Note: If answer is "Yes", you must file a statement with the Supervisor of Elections, pursuant to Florida Statutes 112.313.)

No ___ Yes ___ Name & position _____

Drug-Free Workplace: Whenever two or more bids which are equal with respect to price, quality, and service are received for the procurement of commodities or contractual service, a bid received from a business that certifies that it has implemented a Drug-free Workplace Program shall be given preference in the award process. If bidder's company has a Drug-free Workplace Program as outlined in General Conditions, section 32., so certify below:

Yes, bidder has a drug-free workplace program ___ No _____

Is your company a Small Business Enterprise? (if yes, please provide a copy of your certification)

Yes ___ No _____

Bidder Name _____

Name & address of company submitting bid:

.....
.....
..... zip

Federal Employer Identification # or Social Security #:

.....

Telephone number:

"Fax" number:

Acknowledgment of the following Addenda is noted:

Addendum Number(s) _____ Date(s) Issued _____

Manual signature of company officer:

IMPORTANT!!! -- SIGN IN BOX ABOVE ↑, TYPE OR PRINT NAME BELOW ↓

Signer's name (typed or printed):

Title of signer:

*** Submit one (1) original bid, and one (1) copy. Submit two (2) original copies of all brochures, diagrams, etc.

**BID H-58-11, FLUORIDE METERING SKID SYSTEM
STATEMENT OF NO RESPONSE**

If you do not intend to bid on this requirement, please complete and return this form by the bid opening deadline to the City of Pompano Beach Purchasing Division, Building C, 1190 N.E. 3rd Avenue, Pompano Beach, Florida 33060; this form may be faxed to (954) 786-4168. Failure to respond, either by submitting a bid, or by submitting a "Statement of No Response" form, may result in your firm's name being removed from our mailing list.

WE, the undersigned, have declined to bid on this solicitation for the following reason(s):

- _____ We do not offer this product or an equivalent
- _____ Our workload would not permit us to perform
- _____ Insufficient time to respond to the Invitation for Bid
- _____ Unable to meet specifications (explain below)
- _____ Other (specify below)

Remarks _____

COMPANY NAME _____

ADDRESS _____

TELEPHONE _____

SIGNATURE/TITLE _____

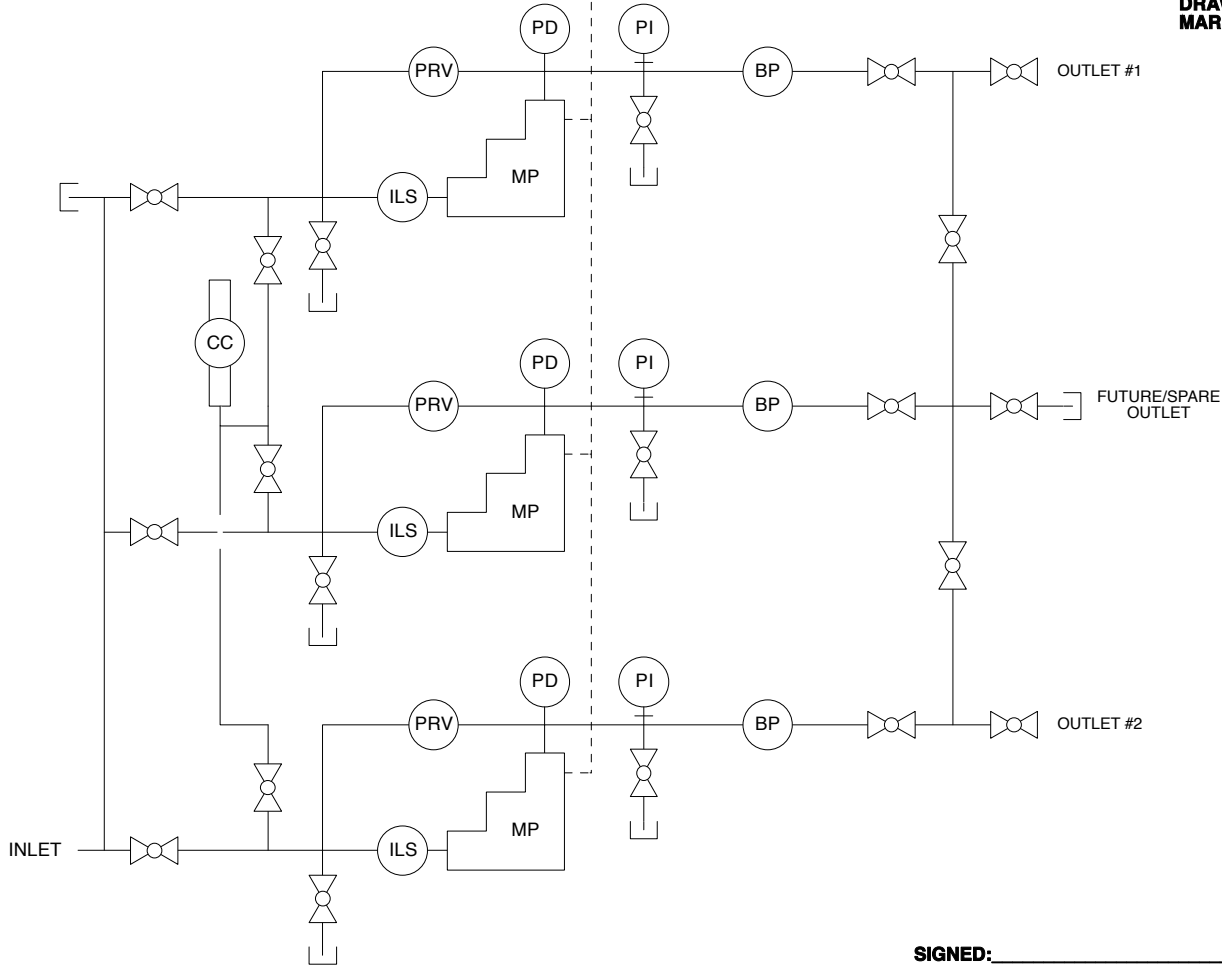
DATE _____

- TERMINALS FOR MAIN 120V POWER CONNECTION.
- HEAVY DUTY 120VAC SURGE ARRESTOR.
- LOCAL 15A BREAKER.
- PRE-WIRED OUTLET FOR METERING PUMP POWER CORDS WITH IN-USE WEATHERPROOF COVER PROVIDED ON METERING SKID.

- DOOR MOUNTED HAND-OFF-AUTO SELECTOR FOR EACH PUMP (3-TOTAL).
- DISCRETE INPUT: RUN COMMAND FOR EACH PUMP (3-TOTAL).
- ANALOG INPUT: SPEED REFERENCE WITH SURGE PROTECTION FOR EACH PUMP (3-TOTAL).
- ANALOG OUTPUT: SPEED FEEDBACK WITH SURGE PROTECTION FOR EACH PUMP (3-TOTAL).
- DISCRETE OUTPUT: IN REMOTE STATUS FOR EACH PUMP (3-TOTAL).
- DISCRETE OUTPUT: FAULT STATUS FOR EACH PUMP (3-TOTAL).

TERMINAL JUNCTION BOX

METERING SKID



NOTE: A CHECKED (ALL BOXES) AND SIGNED COPY OF THIS DRAWING MUST BE ENCLOSED WITH BID FOR CONSIDERATION. MARKUPS OR EXCEPTIONS SHALL NOT BE CONSIDERED.

- DUAL CHEMICAL INLET CONNECTIONS WITH PLUG PROVIDED FOR UN-USED CONNECTION.
- ISOLATION AND CROSS OVER TRUE UNION BALL VALVES AS INDICATED.
- CALIBRATION COLUMN DESIGNED FOR INDEPENDANT USE SUCH THAT ANY METERING PUMP MAY BE CALIBRATED WHILE OTHER PUMPS REMAIN IN ACTIVE SERVICE.
- SUCTION DRAIN/FLUSH VALVE WITH PLUG FOR EACH PUMP (3-TOTAL) DESIGNED FOR INDEPENDANT USE SUCH THAT ANY METERING PUMP MAY BE FLUSHED WHILE OTHER PUMPS REMAIN IN ACTIVE SERVICE.
- IN LINE STRAINER FOR EACH PUMP (3-TOTAL). STRAINER SHALL BE LOCATED SO THAT ALL MEDIA ENTERING PUMP INLET MUST PASS THROUGH THE STRAINER.
- PRESSURE RELIEF VALVE FOR EACH PUMP (3-TOTAL). PRESSURE RELIEF VALVE RETURN SHALL BE PLUMBED BACK TO METERING PUMP SUCTION.
- PULSATION DAMPENER FOR EACH PUMP (3-TOTAL) MOUNTED AS CLOSE TO DISCHARGE CHECK VALVE AS PRACTICAL.
- PRESSURE GAUGE WITH PVC ISOLATOR FOR EACH METERING PUMP (3-TOTAL).
- DISCHARGE DRAIN/FLUSH VALVE WITH PLUG FOR EACH PUMP (3-TOTAL) DESIGNED FOR INDEPENDANT USE SUCH THAT ANY METERING PUMP MAY BE FLUSHED WHILE OTHER PUMPS REMAIN IN ACTIVE SERVICE.
- BACK PRESSURE VALVE FOR EACH METERING PUMP (3-TOTAL).
- THREE (3) CHEMICAL OUTLETS WITH MIDDLE OUTLET PLUGGED FOR FUTURE USE.

SIGNED: _____ DATE: _____

SYMBOLS

