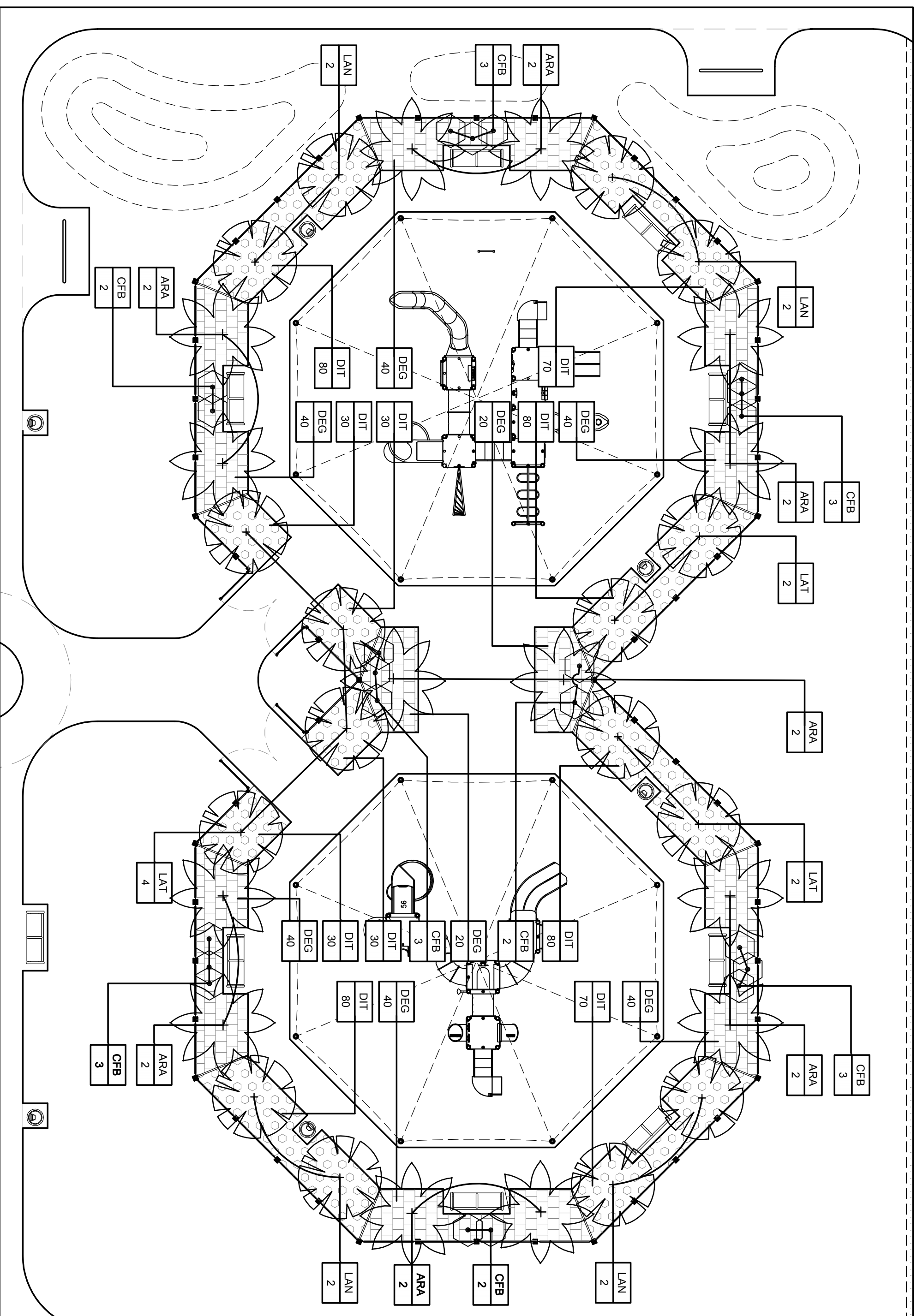
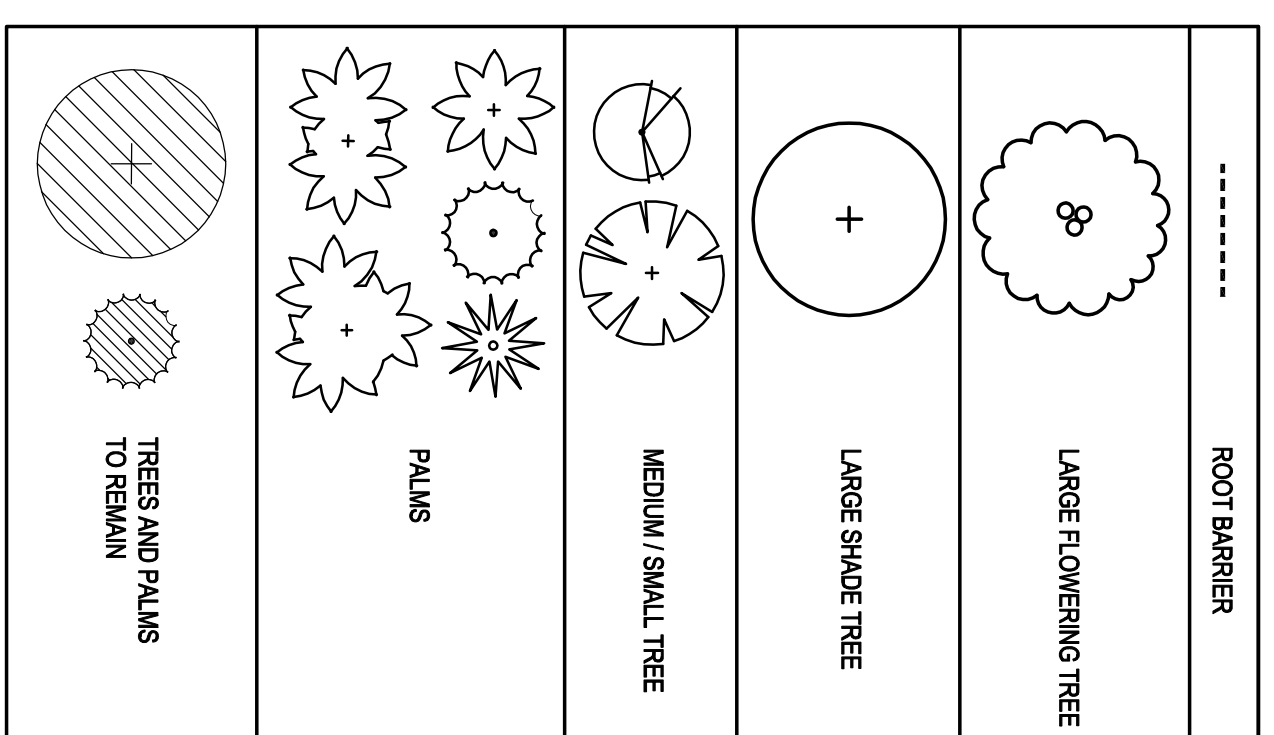


# PLAYGROUND ENLARGEMENT - PLANTING PLAN

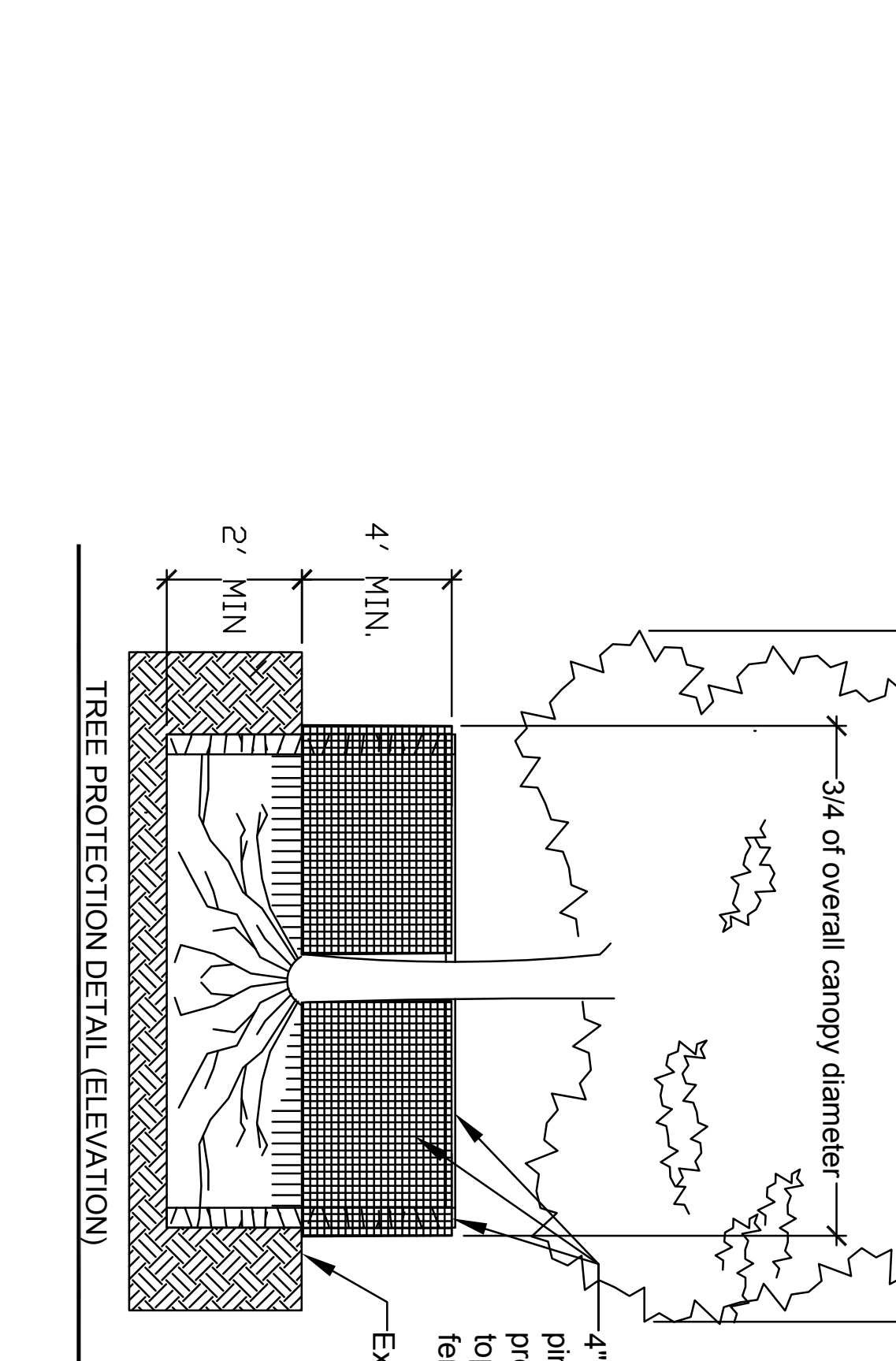
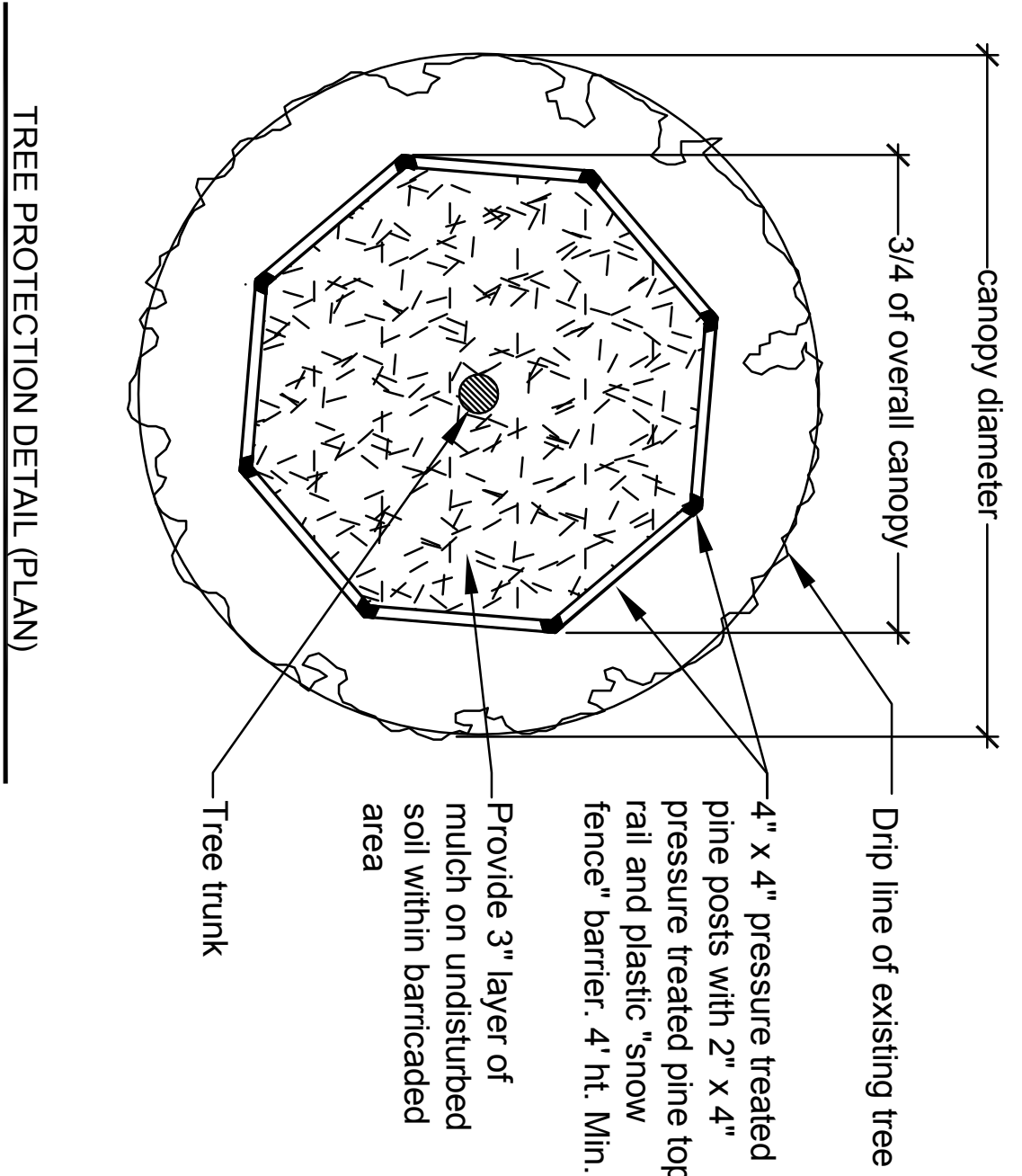


\*SEE L-4.5, DETAIL 5 FOR PLANTING LIST



## 1 Playground Enlargement - Planting Plan

L-4.5 SCALE: 3/32"=1'



## 3 TREE PROTECTION DETAILS

L-4.5 SCALE: NOT TO SCALE

TREE MITIGATION			
REQUIRED MITIGATION POINTS (POST CONSTRUCTION)			
			792
PROPOSED LANDSCAPE MITIGATION			
PLANTING	SIZE	MITIGATION PTS.	COUNT
CAT. 1 TREE	12\"/>		

NOTE: TREE MITIGATION REQUIREMENTS WILL BE IMPLEMENTED IN THE PLANTING PLAN NOTE: Tree mitigation points based on Broward County, Environmental Protection Department's - Codes and Standards

## 6 TREE MITIGATION TABLE

L-4.5 SCALE: NOT TO SCALE

## 5 PLANT LIST

L-4.5 SCALE: N/A

Note: All B&B plant material shall be obtained from an approved RFG (Roots Plus Growers). Landscape Contractor shall fertilize plant material as needed to support optimum healthy plant growth. All fertilization shall be performed in compliance with the latest ANSI A330 (Part 2) Standards to remove existing tennis court growth of new plant material. Contractor is responsible to provide healthy landscape architect to approve fill material. Contractor to verify sufficient penetration of all plant material quantities.

## 2 GENERAL AND PLANTING NOTES

L-4.5 SCALE: N/A

- Before beginning work, the Contractor is required to meet with the Landscape Architect at the site to review all work procedures, access routes, storage areas, and tree protection measures.
- may not be repaired or removed without the written permission of the Landscape Architect. Refer to Detail 3: Tree Protection Details.
- Construction trailers, traffic and storage areas must remain outside fenced areas at all times.
- All underground utilities and drain or irrigation lines shall be routed outside the tree protection zone. If lines must traverse the protection area, they shall be tunneled or bored under the tree.
- No materials, equipment, spoil or waste or washout water may be deposited, stored, or parked within the tree protection zone (fenced area).
- Additional watering required or desirable during construction shall be performed by a qualified staff and not by construction personnel in the tree-safety and not easily transported by water.
- Acidic substances shall not be applied to the tree-safety and not easily transported by water.
- If injury should occur to any tree during construction, it should be evaluated as soon as possible by the Landscape Contractor and the Landscape Architect should be notified immediately.
- Any grading, construction, demolition, or other work that is expected to encounter tree roots must be monitored by the Landscape Contractor.
- All trees shall be irrigated three times a week. Each irrigation procedure shall wet the soil within the tree protection zone to a depth of 30 inches.
- Erosion control devices such as silt fencing, debris basins, and water diversion structures shall be installed to prevent tree erosion and station stations and/or erosion within the tree protection zones.
- Any trees that are damaged or killed during construction shall be replaced with a tree of the same or similar species and size within 90 days of the date of damage or death.
- Stumps shall be cut manually by digging a trench and cutting exposed roots with a saw, including utility, deck saw, narrow header with stump blades, or other approved root-pulling equipment.
- Any roots damaged during grading or construction shall be exposed to sound tissue and cut cleanly with a saw.
- If temporary haul or access roads must pass over the root area of trees to be retained, a road bed of 6 inches of mulch or gravel shall be created to protect the soil. The road bed material shall be replaced as necessary to maintain a 6-inch depth.
- No burn piles or debris piles shall be placed within the tree protection zone. No ashes, debris, or garbage may be dumped or buried within the tree protection zone.
- Maintain fire-safe areas around fenced areas. Also, no heat sources, flames, ignition sources, or smoking is allowed near mulch or trees.

## 4 TREE AND PALM PROTECTION NOTES

L-4.5 SCALE: N/A

SYMBOL	QUANTITY	SCIENTIFIC NAME	COMMON NAME	MATURE CALIPER	HEIGHT (FT)	CANOPY	CONTAINER	SPACING	CONDITION	PLANT LIST	
										PLANT LIST	PLANT LIST
SP1T	42	Sabal palmetto	Sabal Palm	12\"/>							
SP4F	63	Sabal palmetto	Sabal Palm	12\"/>							
ARA	14	Acrochroa palm	Alexander Palm, SN	4\"/>							
ARA2	3	Acrochroa palm	Alexander Palm, DB	4\"/>							
ARA3	6	Acrochroa palm	Alexander Palm, TR	4\"/>							
WOB	15	Wrightia palm	Fox Tail Palm	4\"/>							
THR	19	Thrinax palm	Thatch Palm	4\"/>							
OLIV	30	Olea europaea	Little Olive	3\"/>							
BUS	29	Bursera simaruba	Gumbo Limbo	3\"/>							
THO	10	Thouinia discolor	Bald Cypress	3\"/>							
COE	22	Coccoloba erectus	Green Balmwood	14\"/>							
CEE	6	Coccoloba erectus	Silver Balmwood	2\"/>							
DER	13	Derris regia	Royal Poinciana	14\"/>							
PEP	11	Pithecolobium platylobum	Yellow Poinciana	12\"/>							
LAT	15	Lagerströmia indica	Tuesartor	10\"/>							
LAI	8	Lagerströmia indica	Cape Maple, Natchez	5\"/>							
LAI	6	Lagerströmia indica	Cape Maple, Natchez	2\"/>							
SAT	350	Scaevola taccada	Hawaiian Schiftera	24\"/>							
CHI	780	Chrysanthemum indicum	Cockatoo	24\"/>							
ZAF	530	Zinnia lurida	Candiedum Palm	24\"/>							
PTV	355	Pithecolobium tobira	Variegated	18\"/>							
PSN	90	Psychotria nervosa	Wild Coffee	24\"/>							
HAP	165	Hamelia patens	Fireball	4\"/>							
DT	580	Davallia ternstroemii	Blakey Fern, LY	12\"/>							
DES	280	Davallia ternstroemii	Davallia Fern, LY	18\"/>							
FAM	1070	Ficus microcarpa	Charlie Island	12\"/>							
ZAP	205	Zamia palmata	Coccoloba	12\"/>							
HED	460	Hedera helix	Beard Sulfur	12\"/>							
NEE	310	Neritodea ovalata	Sword Fern	12\"/>							
CFB	43	Cordia alliodora	Red Sider	24\"/>							
MUC	615	Mulberry alba	Mulberry	12\"/>							
TRE	380	Treesium grandis	Dwarf Scaevola	12\"/>							
TRD	300	Treesium grandis	Faded Scaevola	20\"/>							
STS	78 900	Stenandrium secundatum	St. Augustine Grass	NA	NA	NA	SOIF	Sun			

**BID SET**

Revisions:

- October 16, 2010 Landscape revision
- 11-05-10 City of Pompano Beach Revisions
- 11-05-10 City of Pompano Beach Revisions
- 11-05-10 City of Pompano Beach Revisions

**BERMELLO AAMIL & PARTNERS, INC**

Architecture • Engineering • Planning  
Interior Design • Landscape Architecture

2807 South Bay, Palm Beaches, FL 33409  
Miami, Florida 33133  
(305) 559-2050  
Fax: (305) 860-3700

Smith Engineering Consultants, Inc.  
2161 Palm Beach Lakes Blvd., Suite 312  
West Palm Beach, FL 33409

PREPARED FOR:

**CITY OF POMPAÑO BEACH**

MONIKA S. GAMBLE R.L.A.  
LA001379  
LA001379

PROJECT NAME: **PALM AIRE PARK**

PROJECT ADDRESS: 3500 West Palm Aire Drive  
Pompano Beach, Florida

KEY PLAN

PROJECT NO: 1024-400

SCALE: 1/8"=1'-0"

DATE: September 14, 2010

DRAWN: J.V. CI

CHECKED: RH

CAOD FILE:

DRAWING TITLE: PLAYGROUND ENLARGEMENT PLANTING PLAN  
GENERAL PLANTING AND TREE PROTECTION NOTES  
TREE PROTECTION DETAILS

PLANTING LIST AND MITIGATION TABLE  
SHEET NO. **L-4.5**

STATE OF FLORIDA  
LANDSCAPE ARCHITECT  
LA001379