

Performance Brief

Pompano Beach Fire Rescue



October 2008

Incidents Summary Analysis

After declining for three straight months, **requests for emergency assistance** edged up to 65 per day in October. This represented an increase of 5 percent as compared to the previous month and 5 percent when compared to the same period a year ago.

Incidents by major category - With 74 percent of the incidents, EMS rescue calls continued to account for the largest share of the calls firefighters responded to in October.

- Fires accounted for 1 percent of the calls
- Vehicle accidents (5%)
- HAZMAT type incidents (2%)
- False alarms (7%)
- Other category of incidents (10%)

Fire incidents and property loss estimates - Fire losses were estimated at \$252,103 or a 27 percent *loss-to-value* ratio. There were no fire fatalities.

Incidents by zone - With 25 percent of the calls, Zone 52 accounted for the largest share of the call volume in October, followed by

- Zone 63 with 21 percent
- Zone 61 (18%)
- Zone 24 (14%)
- Zone 103 (12%)
- Zone 11 (11%)

Emergency Response by Truck - Unit response (which is the number of times emergency vehicles were dispatched to 911 calls) averaged 6.6 incidents per unit per day in October, virtually unchanged when compared to the same period last year.

With 11.8 and 11.6 runs a day, Rescues 52 and 63 responded to more incidents than any other units in October. Engines 11 and 103 responded to the fewest number of incidents – averaging 3.8 and 3.5 responses per day.

Emergency response by time of day – With 139 incidents the hour of 1:00 to 2:00 p.m. registered more incidents than any other hour of the day during the month of October. The

lowest time period was from 2:00 to 3:00 a.m. and 3:00 to 4:00 a.m. with each totaling 46 calls.

When grouping call volume in 4-hour increments, the busiest time period was from 4:00 p.m. to 8:00 p.m., accounting for 22 percent of the calls, totaling 451 incidents - followed by

- Noon to 4:00 p.m. with 22% or 445 calls
- 8:00 p.m. to Midnight (18%) or 373 calls
- 8:00 a.m. to Noon (18%) or 359 calls
- 4:00 a.m. to 8:00 a.m. (10%) or 200 calls
- Midnight to 4:00 a.m. (10%) or 193 calls

Overall Response time - Measured from the time the 9-1-1 dispatcher receives the call from the person reporting the incident to the time when fire-rescue signal their arrival on the scene of the incident, average response increased slightly to 5:30 minutes from the previous month - but remained unchanged as compared to the same period a year ago. The cumulative response times for October were as follows:

- 1% of the calls were within 1:00 minute
- 4% within 2:00 minutes
- 11% within 3:00 minutes
- 29% within 4:00 minutes
- 53% within 5:00 minutes
- 70% within 6:00 minutes
- 83% within 7:00 minutes
- 91% within 8:00 minutes
- 95% within 9:00 minutes
- 97% within 10:00 minutes

Response Time by Zone - With 4:40 minutes, Zone 11 continued to register the lowest average response time in the city. Zone 61 posted the highest average response with 5:51 minutes.

- Zone 63 posted 5:28 minutes
- Zone 103 (5:03)
- Zone 24 (5:39)
- Zone 52 (5:50)

Eighty eight percent of the responses to Zone 11 were within 6 minutes, compared to 58 percent for Zone 61.

Contents

Page	
1	Incidents Summary Analysis
3	Reference Charts and Tables
23	Map of the City of Pompano Beach

This is an update on Pompano Beach Fire Rescue’s operational performance. The report highlights the department’s activities for October 2008 and provides impartial analysis on data trends in accordance with department policy. **This document summarizes the department’s performance by answering 2 key questions: What was the level of demand for service? And how did the organization perform?**

All years referred to in this report are fiscal years. Numbers in the text and exhibits may not add up to totals because of rounding. The sum of zone totals may not add up to total incident because of computer data input errors and the exclusion of Mutual Aid data incidents from zone totals. The sum of dispatch time, turnout time, and travel time may not add up to total response time because there are instances where dispatch time, turnout time, or travel time data are not available to be included in the calculation of response time.

- A total of 2021 records were identified for October 2008
- A total of 1728 (86%) records were used in the calculation of Dispatch Time
- A total of 1715 (85%) records were used in the calculation of Turnout Time
- A total of 1709 (85%) records were used in the calculation of Travel Time
- A total of 1709 (85%) records were used in the calculation of Response Time

Broward Sheriff Office runs and operates the communications dispatch center and thus control dispatch time.

The city is divided into six zones; each has a dedicated fire station. The calls are spread over 24 hours and divided among 14 fire/rescue units, including a rescue van that operates 12 hours/day to help provide coverage primarily to Zone 52 (see Fire Response Zones Map on Page 23).

The indices published herein are calculated in some cases back to fiscal year 2000 as data availability allows.

Since some data for earlier years or months may have been updated or corrected, readers are naturally always encouraged to use the data from the most recent Performance Brief publication.

This report is also available at
the fire department’s webpage
www.mypompanobeach.org/fire/stats.html

Reference Charts and Tables

Incidents and Incidents by Zone

Average per Day

	FY 01	FY 02	FY 03	FY 04	FY 05	FY 06	FY 07	FY 08	OCT 08
Citywide	53	54	59	62	68	69	65	65	65
Zone 11	6	6	6	7	7	7	7	7	7
Zone 24	6	6	8	9	10	10	9	9	9
Zone 52	14	14	14	15	16	17	17	16	16
Zone 61	10	10	9	9	11	12	11	11	11
Zone 63	11	13	13	12	13	14	13	13	13
Zone 103	3	3	6	6	7	9	8	8	8

Incidents by Zone

Percent of all Incidents

	FY 01	FY 02	FY 03	FY 04	FY 05	FY 06	FY 07	FY 08	OCT 08
Zone 11	12	11	11	11	11	10	11	11	11
Zone 24	12	12	15	16	15	14	14	14	14
Zone 52	27	27	26	25	25	24	26	25	25
Zone 61	20	20	16	16	17	17	17	17	18
Zone 63	23	24	22	21	20	21	20	20	21
Zone 103	7	6	11	11	11	12	12	12	12

Incidents by Incident Types

Percent of all Incidents

	FY 01	FY 02	FY 03	FY 04	FY 05	FY 06	FY 07	FY 08	OCT 08
Fires	2	2	2	2	2	2	2	2	1
Vehicle Acc.	8	7	8	9	9	7	5	5	5
HAZMAT	3	3	3	3	4	4	2	2	2
EMS/Rescues	72	75	75	73	74	70	76	75	74
False Alarms	8	7	6	7	6	8	6	6	7
Other	7	6	7	7	6	9	9	6	10

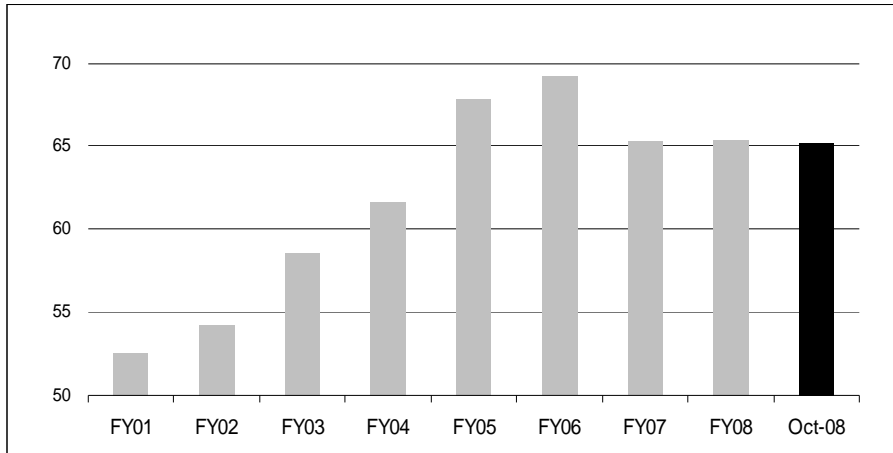
Response Times

Average

	FY 01	FY 02	FY 03	FY 04	FY 05	FY 06	FY 07	FY 08	OCT 08
Citywide	7:56	5:52	5:40	5:18	6:06	6:11	5:40	5:26	5:30
Zone 11	6:11	5:25	5:19	4:51	5:08	5:11	4:49	4:34	4:40
Zone 24	9:40	5:51	5:58	5:30	6:00	5:58	5:37	5:28	5:27
Zone 52	7:09	6:31	6:39	5:50	6:36	6:37	5:56	5:43	5:50
Zone 61	10:52	6:37	6:14	5:55	6:32	6:45	6:17	6:08	5:51
Zone 63	6:51	6:06	5:39	5:18	5:53	5:51	5:19	5:19	5:28
Zone 103	7:09	6:15	6:25	6:17	5:50	6:02	5:32	5:32	5:03

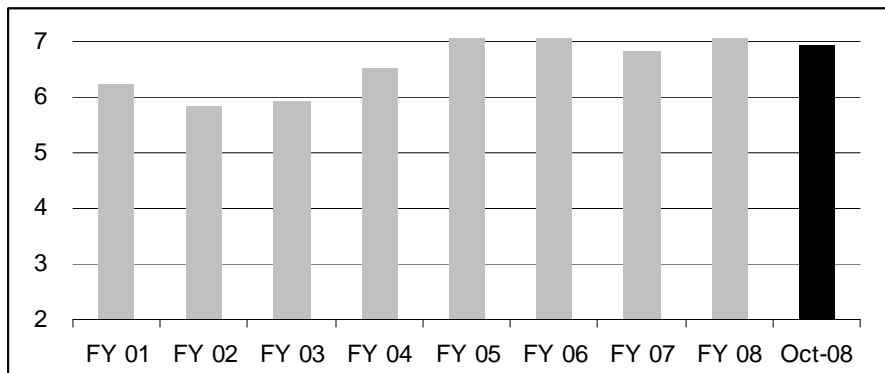
Total Incidents

Average per Day



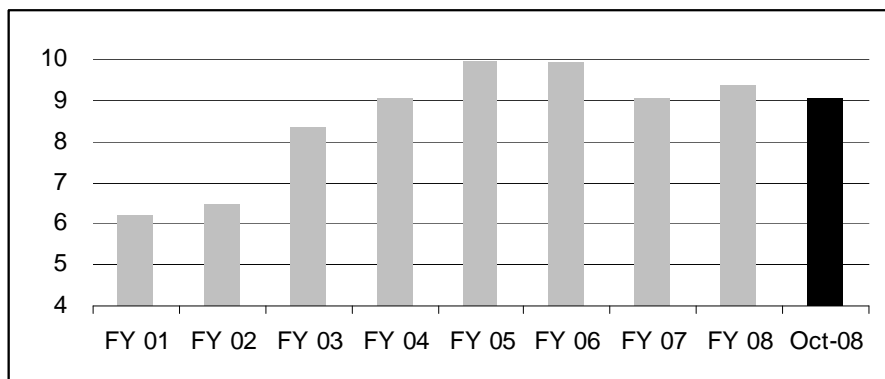
Zone 11 Incidents

Average per Day



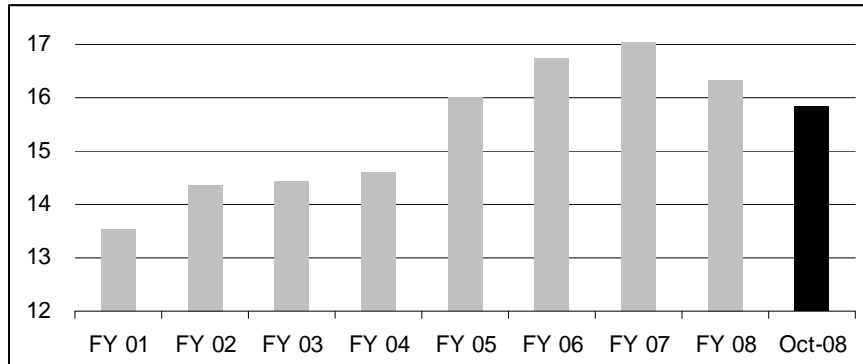
Zone 24 Incidents

Average per Day



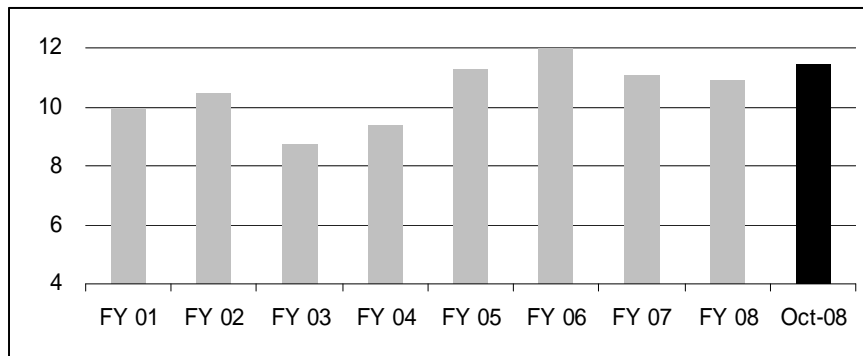
Zone 52 Incidents

Average per Day



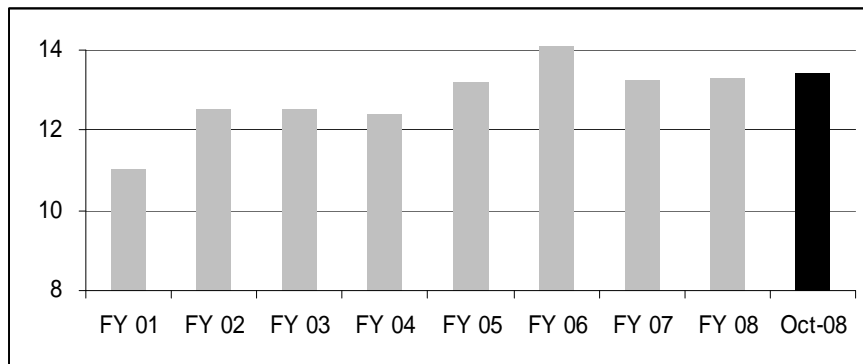
Zone 61 Incidents

Average per Day



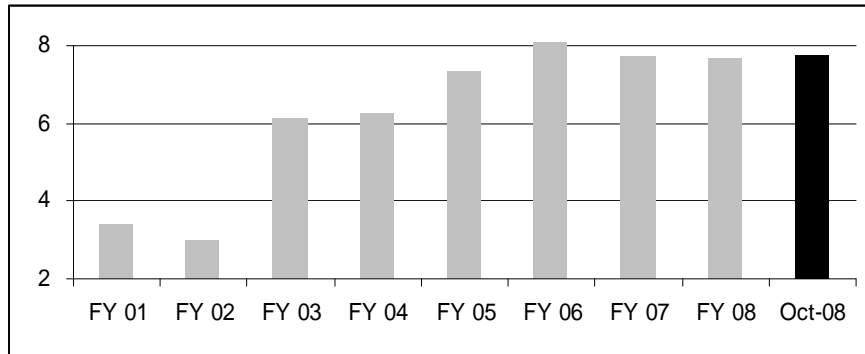
Zone 63 Incidents

Average per Day



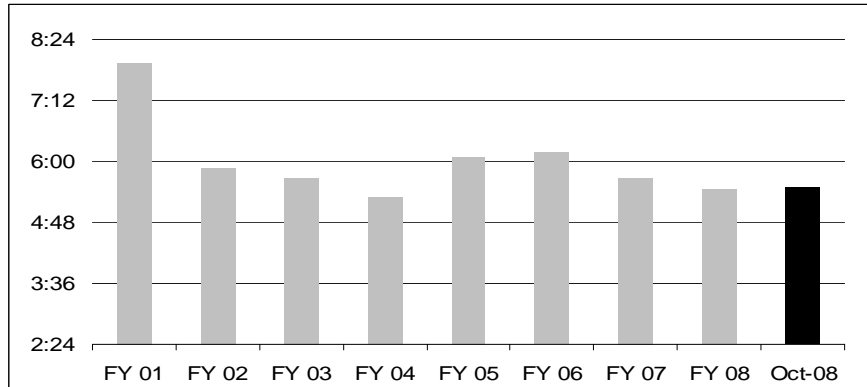
Zone 103 Incidents

Average per Day



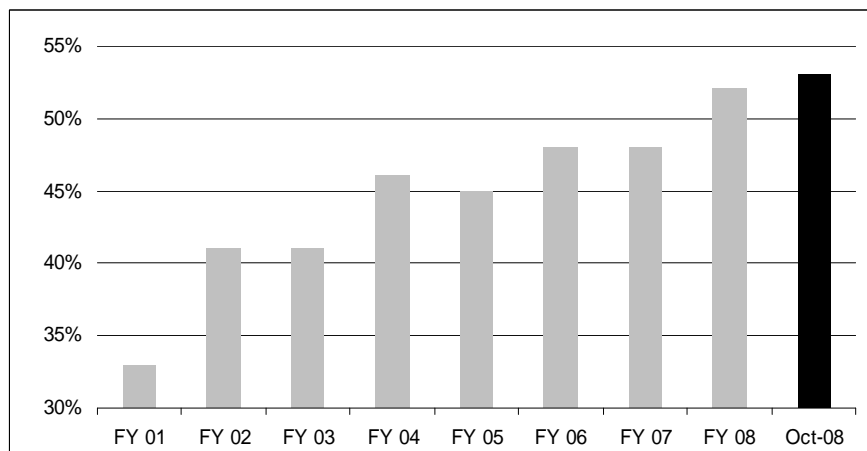
Average Response Time

Citywide



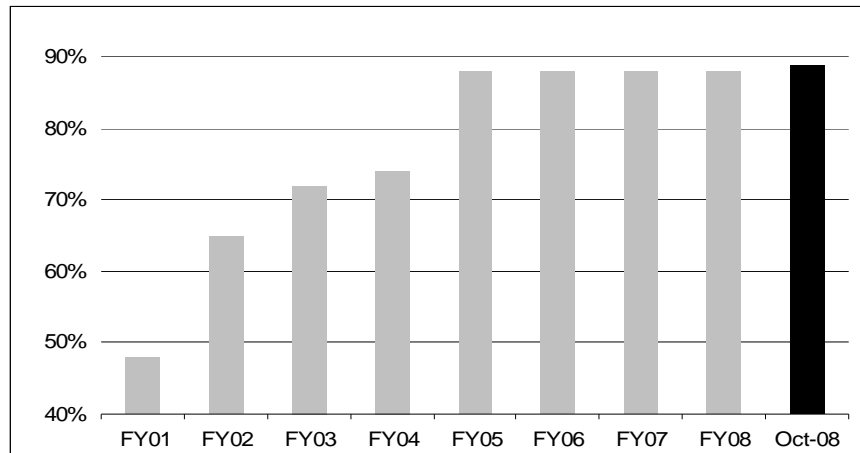
Fractile Response Time

Calls within 5 minutes



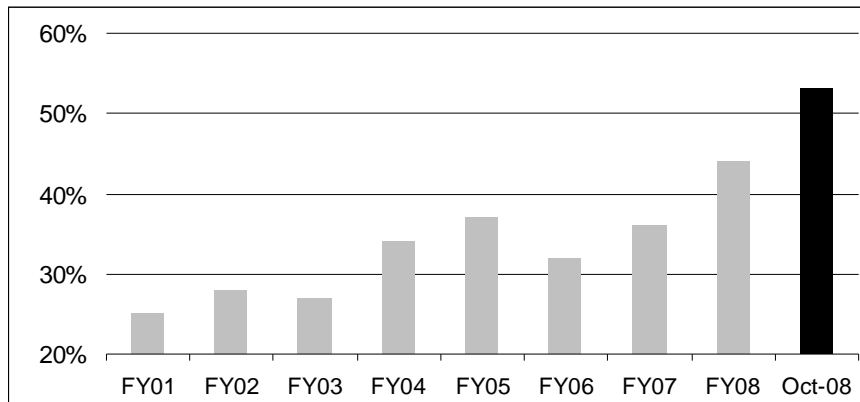
Fractile Dispatch Time

Calls within 1 minute



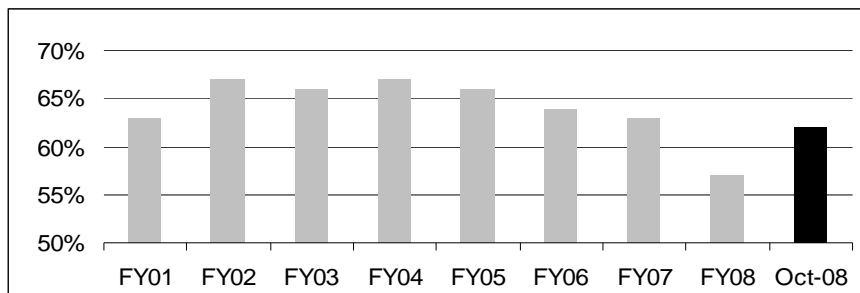
Fractile Turnout Time

Calls within 1 minute



Fractile Travel Time

Calls within 4 minutes



**Exhibit 1
Emergency Response**

	Incidents per Day	Total Incidents	Incident Types and Percent of Total					
			Fire Incidents	Vehicle Accidents	Hazardous Conditions	EMS Rescues	False Alarms	Other Calls
FY 2001	53	19190	462 (2%)	1446 (8%)	606 (3%)	13830 (72%)	1444 (8%)	1402 (7%)
FY 2002	54	19794	407 (2%)	1460 (7%)	556 (3%)	14755 (75%)	1340 (7%)	1276 (6%)
FY 2003	59	21376	390 (2%)	1732 (8%)	601 (3%)	15957 (75%)	1307 (6%)	1389 (7%)
FY 2004	62	22508	451 (2%)	1974 (9%)	752 (3%)	16352 (73%)	1516 (7%)	1463 (7%)
FY 2005	67	24753	495 (2%)	2133 (9%)	870 (4%)	18190 (74%)	1483 (6%)	1582 (6%)
FY 2006	69	25249	571 (2%)	1867 (7%)	961 (4%)	17571 (70%)	1899 (8%)	2380 (9%)
FY 2007	65	23816	432 (2%)	1257 (5%)	495 (2%)	18031 (76%)	1515 (6%)	2086 (9%)
FY 2008	65	23852	414 (2%)	1211 (5%)	577 (2%)	17977 (75%)	1511 (6%)	2162 (9%)
Oct-05	77	2379	55 (2%)	148 (6%)	257 (11%)	1499 (63%)	208 (9%)	212 (9%)
Nov-05	76	2286	66 (3%)	159 (7%)	164 (7%)	1447 (64%)	230 (10%)	220 (10%)
Dec-05	67	2084	42 (2%)	187 (9%)	55 (3%)	1493 (72%)	151 (7%)	156 (8%)
Jan-06	67	2073	45 (2%)	170 (8%)	53 (3%)	1496 (72%)	145 (7%)	164 (8%)
Feb-06	77	2142	46 (2%)	164 (8%)	46 (2%)	1558 (73%)	141 (7%)	187 (9%)
Mar-06	70	2189	58 (3%)	168 (8%)	49 (2%)	1547 (71%)	134 (6%)	233 (11%)
April-06	65	1945	56 (3%)	149 (8%)	52 (3%)	1394 (72%)	110 (6%)	184 (10%)
May-06	64	1995	40 (2%)	145 (7%)	56 (3%)	1384 (69%)	182 (9%)	188 (9%)
Jun-06	68	2040	52 (3%)	151 (7%)	50 (3%)	1420 (70%)	170 (8%)	197 (10%)
Jul-06	68	2095	36 (2%)	136 (6%)	53 (3%)	1493 (71%)	162 (8%)	215 (10%)
Aug-06	67	2077	36 (2%)	134 (6%)	78 (4%)	1469 (71%)	157 (8%)	203 (10%)
Sep-06	65	1944	40 (2%)	155 (8%)	51 (3%)	1359 (70%)	125 (6%)	214 (11%)
Oct-06	62	1918	36 (2%)	133 (7%)	34 (2%)	1403 (73%)	113 (6%)	199 (10%)
Nov-06	61	1827	31 (2%)	144 (8%)	42 (2%)	1342 (73%)	125 (7%)	143 (8%)
Dec-06	63	1946	35 (2%)	153 (8%)	41 (2%)	1441 (74%)	105 (5%)	171 (9%)
Jan-07	65	2008	45 (2%)	83 (4%)	52 (3%)	1566 (78%)	93 (5%)	169 (8%)
Feb-07	68	1895	26 (1%)	74 (4%)	35 (2%)	1478 (78%)	130 (7%)	152 (8%)
Mar-07	72	2232	46 (2%)	91 (4%)	39 (2%)	1721 (77%)	143 (6%)	192 (8%)
Apr-07	66	1978	49 (2%)	99 (5%)	35 (2%)	1505 (76%)	96 (5%)	194 (10%)
May-07	65	2010	48 (2%)	102 (5%)	35 (2%)	1503 (75%)	143 (7%)	179 (10%)
Jun-07	70	2090	30 (1%)	107 (5%)	56 (3%)	1536 (73%)	170 (8%)	191 (9%)
Jul-07	66	2052	33 (2%)	84 (4%)	34 (2%)	1570 (77%)	149 (7%)	182 (9%)
Aug-07	61	1903	26 (1%)	98 (5%)	39 (2%)	1447 (76%)	134 (7%)	159 (8%)
Sep-07	65	1961	28 (1%)	91 (5%)	55 (3%)	1511 (77%)	119 (6%)	157 (8%)
Oct-07	62	1926	24 (1%)	83 (4%)	55 (3%)	1496 (78%)	118 (6%)	150 (8%)
Nov-07	61	1820	24 (1%)	138 (8%)	35 (2%)	1358 (75%)	113 (6%)	152 (8%)
Dec-07	64	1988	32 (2%)	82 (4%)	37 (2%)	1540 (77%)	111 (6%)	186 (9%)
Jan-08	66	2060	33 (2%)	93 (5%)	44 (2%)	1563 (76%)	132 (6%)	195 (9%)
Feb-08	71	2046	41 (2%)	115 (6%)	37 (2%)	1525 (75%)	134 (7%)	193 (9%)
Mar-08	71	2207	44 (2%)	92 (4%)	48 (2%)	1689 (77%)	139 (6%)	195 (9%)
Apr-08	66	1971	43 (2%)	102 (5%)	55 (3%)	1477 (75%)	108 (5%)	186 (9%)
May-08	63	1965	45 (2%)	101 (5%)	47 (2%)	1470 (75%)	120 (6%)	182 (9%)
Jun-08	67	1999	37 (2%)	93 (5%)	48 (2%)	1528 (76%)	140 (7%)	153 (8%)
July-08	66	2040	47 (2%)	100 (5%)	63 (3%)	1528 (75%)	133 (7%)	169 (8%)
Aug-08	64	1977	20 (1%)	108 (5%)	57 (3%)	1428 (72%)	147 (7%)	217 (11%)
Sep-08	62	1863	25 (1%)	93 (5%)	51 (3%)	1387 (74%)	115 (6%)	192 (10%)
Oct-08	65	2021	27 (1%)	106 (5%)	51 (2%)	1497 (74%)	147 (7%)	205 (10%)

**Exhibit 2
Pompano Beach Fire Rescue
Emergency Medical Transports**

	Transports per Day	Total Transports	% Change Year Ago	% of Total Calls
FY 2001	30	10918	12%	57%
FY 2002	32	11772	8%	59%
FY 2003	35	12858	9%	60%
FY 2004	38	13792	7%	61%
FY 2005	40	14881	8%	60%
FY 2006	39	14276	-4%	57%
FY 2007	39	14140	-1%	59%
FY 2008	38	13966	-1%	58%
Oct-05	44	1377	17%	58%
Nov-05	37	1125	1%	49%
Dec-05	41	1270	6%	61%
Jan-06	40	1230	-1%	59%
Feb-06	45	1271	-3%	59%
Mar-06	37	1250	-7%	57%
April-06	35	1109	-11%	57%
May-06	37	1102	-13%	55%
June-06	37	1126	-3%	55%
July-06	37	1153	-11%	55%
Aug-06	37	1152	-12%	55%
Sep-06	37	1111	-3%	57%
Oct-06	35	1099	-20%	57%
Nov-06	36	1086	-3%	59%
Dec-06	38	1189	-6%	61%
Jan-07	39	1201	-2%	60%
Feb-07	41	1146	-10%	60%
Mar-07	42	1324	6%	60%
April-07	39	1177	6%	59%
May-07	38	1188	8%	59%
June-07	41	1220	8%	58%
July-07	40	1232	7%	60%
Aug-07	36	1131	-2%	59%
Sep-07	38	1147	3%	58%
Oct-07	36	1122	2%	58%
Nov-07	36	1085	0%	60%
Dec-07	38	1172	0%	59%
Jan-08	39	1218	1%	59%
Feb-08	42	1212	5%	59%
Mar-08	42	1318	0%	60%
Apr-08	38	1148	-2%	58%
May-08	36	1130	-5%	57%
June-08	39	1159	-5%	58%
July-08	38	1184	-4%	58%
Aug-08	36	1117	-1%	56%
Sep-08	37	1110	-3%	60%
Oct-08	38	1176	5%	58%

**Exhibit 3
Fire Prevention and Safety**

	Total Fire Loss (in Dollar)	Total Value (in Dollar)	Fire Loss to Value Ratio	Fire Related Deaths	Fire Inspections	CPR	NCFI	Fire Invest- igation	HFT	PFPP
FY 2000	1,069,450	1,445,750	74%	0	2958	n/a	n/a	n/a	n/a	n/a
FY 2001	586,640	721,740	81%	0	1676	1803	1123	n/a	n/a	n/a
FY 2002	2,549,780	4,498,730	57%	0	2970	1619	1390	n/a	n/a	n/a
FY 2003	1,974,783	3,190,683	62%	0	3465	1615	1254	n/a	n/a	n/a
FY 2004	3,452,321	5,533,921	62%	0	2198	1444	1621	n/a	n/a	n/a
FY 2005	1,662,400	3,953,350	42%	1	2402	1409	2189	n/a	n/a	n/a
FY 2006	13,031,395	28,216,994	46%	3	1683	1425	1731	n/a	n/a	n/a
FY 2007	2,694,418	8,640,518	31%	2	1458	1299	1642	n/a	n/a	n/a
FY 2008	4,101,365	32,886,014	12%	0	3529	1260	2171	5	15	0
Oct-05	258,000	258,000	100%	0	47	89	102	n/a	n/a	n/a
Nov-05	358,500	483,500	74%	0	104	102	100	n/a	n/a	n/a
Dec-05	47,900	125,900	38%	0	196	158	127	n/a	n/a	n/a
Jan-06	182,808	357,808	51%	1	390	114	133	n/a	n/a	n/a
Feb-06	360,050	360,050	100%	0	122	113	142	n/a	n/a	n/a
Mar-06	9,879,800	11,099,800	89%	0	66	98	121	n/a	n/a	n/a
April-06	52,400	52,400	100%	0	62	74	203	n/a	n/a	n/a
May-06	36,401	39,431	92%	0	96	131	253	n/a	n/a	n/a
June-06	413,240	1,703,240	24%	0	266	202	215	n/a	n/a	n/a
July-06	622,601	1,032,610	60%	0	145	153	77	n/a	n/a	n/a
Aug-06	170,430	178,930	95%	2	121	74	134	n/a	n/a	n/a
Sep-06	648,465	11,524,525	6%	0	68	117	124	n/a	n/a	n/a
Oct-06	360,005	886,455	41%	1	100	58	117	n/a	n/a	n/a
Nov-06	184,150	1,629,150	11%	0	92	72	80	n/a	n/a	n/a
Dec-06	369,195	871,995	42%	0	132	146	85	n/a	n/a	n/a
Jan-07	349,035	865,535	40%	0	51	190	215	n/a	n/a	n/a
Feb-07	206,700	206,900	100%	0	68	95	115	n/a	n/a	n/a
Mar-07	228,125	1,116,625	20%	0	74	125	134	n/a	n/a	n/a
April-07	159,253	571,603	28%	0	97	126	190	n/a	n/a	n/a
May-07	307,780	558,680	55%	0	50	148	214	n/a	n/a	n/a
June-07	69,050	69,450	100%	0	182	31	144	n/a	n/a	n/a
July-07	409,130	1,176,630	35%	1	294	26	54	n/a	n/a	n/a
Aug-07	110,545	427,545	26%	0	202	164	171	5	5	0
Sep-07	201,450	519,950	39%	0	116	118	123	5	0	0
Oct-07	58,545	498,545	12%	0	305	113	262	0	0	0
Nov-07	55,057	55,257	99%	0	436	104	154	4	1	0
Dec-07	282,655	1,417,655	20%	0	217	90	160	0	0	0
Jan-08	565,635	20,348,035	3%	0	210	72	184	0	0	0
Feb-08	171,175	573,425	29%	0	325	139	229	0	0	0
Mar-08	232,440	360,940	64%	0	238	126	156	0	0	0
Apr-08	754,751	1,034,751	73%	0	204	75	176	0	0	0
May-08	45,348	1,099,548	4%	0	323	113	180	1	4	0
June-08	277,723	2,310,472	12%	0	336	74	126	0	3	0
July-08	1,291,912	2,843,062	45%	0	248	126	200	0	0	0
Aug-08	103,799	400,299	26%	0	372	124	163	0	4	0
Sep-08	260,575	1,937,475	13%	0	315	104	181	0	3	0
Oct-08	252,103	931,903	27%	0	343	133	230	0	7	n/a

Notes: CPR = Construction Plan Reviews;
HFT = Hydrant Flow Test;

CI = New Construction Field Inspections
PFPP = Pre-Fire Planning

**Exhibit 4
Emergency Response by Zone**

	Zone 11		Zone 24		Zone 52		Zone 61		Zone 63		Zone 103	
	Calls	% of Total	Calls	% of Total	Calls	% of Total	Calls	% of Total	Calls	% of Total	Calls	% of Total
FY 2001	2270	12%	2265	12%	4944	27%	3614	20%	4207	23%	1248	7%
FY 2002	2124	11%	2361	12%	5249	27%	3821	20%	4568	24%	1090	6%
FY 2003	2170	11%	3043	15%	5271	26%	3190	16%	4577	22%	2234	11%
FY 2004	2386	11%	3301	16%	5334	25%	3405	16%	4516	21%	2288	11%
FY 2005	2623	11%	3626	15%	5836	25%	4119	17%	4819	20%	2678	11%
FY 2006	2600	10%	3622	14%	6113	24%	4376	17%	5290	21%	3129	12%
FY 2007	2500	11%	3293	14%	6218	26%	4052	17%	4836	20%	2814	12%
FY 2008	2673	11%	3412	14%	5965	25%	3977	17%	4843	20%	2804	12%
Oct-05	207	11%	294	16%	452	24%	322	17%	391	21%	228	12%
Nov-05	195	11%	238	14%	459	27%	310	18%	336	20%	170	10%
Dec-05	215	12%	286	16%	471	26%	340	19%	306	17%	221	12%
Jan-06	205	11%	272	15%	448	25%	305	17%	372	21%	195	11%
Feb-06	211	12%	286	16%	496	27%	290	16%	363	20%	190	10%
Mar-06	269	13%	318	16%	510	25%	358	18%	402	20%	175	9%
Apr-06	200	10%	318	16%	510	25%	347	17%	425	21%	235	12%
May-06	205	10%	346	17%	475	23%	368	18%	441	21%	237	11%
Jun-06	199	10%	297	15%	480	24%	339	17%	436	22%	251	13%
Jul-06	263	12%	310	14%	555	25%	377	17%	478	21%	258	12%
Aug-06	292	12%	412	17%	549	22%	422	17%	505	20%	276	11%
Sep-06	191	10%	305	15%	476	24%	380	19%	388	20%	233	12%
Oct-06	169	9%	276	14%	440	23%	359	19%	410	21%	254	13%
Nov-06	184	10%	284	16%	430	24%	297	16%	405	22%	222	12%
Dec-06	181	9%	315	16%	503	26%	318	16%	387	20%	231	12%
Jan-07	208	10%	262	13%	518	26%	351	18%	434	22%	226	11%
Feb-07	195	10%	252	13%	523	28%	353	19%	350	19%	217	11%
Mar-07	276	12%	342	15%	579	26%	354	16%	430	19%	245	11%
Apr-07	220	11%	244	12%	570	29%	319	16%	375	19%	239	12%
May-07	228	11%	253	13%	562	28%	331	17%	404	20%	223	11%
Jun-07	204	10%	266	13%	577	28%	369	18%	431	21%	236	11%
Jul-07	221	11%	279	14%	530	27%	367	18%	408	20%	192	10%
Aug-07	211	11%	269	14%	490	26%	296	16%	402	21%	236	12%
Sep-07	206	11%	253	13%	499	26%	338	17%	401	21%	248	13%
Oct-07	211	11%	247	13%	483	25%	356	17%	413	22%	210	11%
Nov-07	184	10%	254	14%	459	25%	314	17%	380	21%	210	12%
Dec-07	216	11%	278	14%	489	25%	336	17%	393	20%	253	13%
Jan-08	243	11%	260	13%	534	26%	353	17%	407	20%	250	12%
Feb-08	254	13%	272	13%	509	25%	328	16%	420	21%	246	12%
Mar-08	339	13%	339	15%	559	25%	346	16%	422	19%	239	11%
Apr-08	243	12%	286	15%	523	27%	292	15%	413	21%	207	11%
May-08	197	12%	294	15%	475	24%	309	16%	435	22%	246	13%
Jun-08	234	12%	311	16%	494	25%	326	16%	378	19%	244	12%
Jul-08	197	10%	304	15%	509	25%	349	17%	423	21%	236	12%
Aug-08	211	11%	266	14%	505	26%	340	17%	384	20%	246	13%
Sep-08	195	11%	301	16%	429	23%	329	18%	375	20%	218	12%
Oct-08	215	11%	280	14%	491	25%	354	18%	417	21%	241	12%

**Exhibit 5
Emergency Response by Day of Week**

	Sun		Mon		Tues		Wed		Thu		Fri		Sat	
	Calls	% of Total	Calls	% of Total	Calls	% of Total	Calls	% of Total	Calls	% of Total	Calls	% of Total	Calls	% of Total
FY 2001	2678	14.0%	2744	14.3%	2701	14.1%	2686	14.0%	2643	13.8%	2853	14.9%	2885	15.0%
FY 2002	2711	13.7%	2956	14.9%	2814	14.2%	2772	14.0%	2669	13.5%	3000	15.2%	2872	14.5%
FY 2003	2941	13.8%	3086	14.4%	3178	14.9%	2898	13.6%	2961	13.9%	3189	14.9%	3123	14.6%
FY 2004	3078	13.7%	3201	14.2%	3165	14.1%	3154	14.0%	3269	14.5%	3262	14.5%	3380	15.0%
FY 2005	3205	12.9%	3607	14.6%	3541	14.3%	3441	13.9%	3651	14.7%	3781	15.3%	3527	14.2%
FY 2006	3533	14.0%	3963	15.7%	3667	14.5%	3411	13.5%	3419	13.5%	3581	14.2%	3675	14.6%
FY 2007	3190	13.4%	3440	14.4%	3375	14.2%	3365	14.1%	3445	14.5%	3551	14.9%	3450	14.5%
FY 2008	3145	13.2%	3586	15.0%	3420	14.3%	3374	14.1%	3354	14.1%	3515	14.7%	3459	14.5%
Oct-05	404	17.0%	742	31.2%	251	10.6%	181	7.6%	180	7.6%	233	9.8%	388	16.3%
Nov-05	264	11.5%	291	12.7%	439	19.2%	385	16.8%	271	11.9%	307	13.4%	329	14.4%
Dec-05	283	13.6%	266	12.8%	279	13.4%	264	12.7%	325	15.6%	335	16.1%	332	15.9%
Jan-06	338	16.3%	373	18.0%	337	16.3%	246	11.9%	248	12.0%	255	12.3%	276	13.3%
Feb-06	321	15.0%	319	14.9%	315	14.7%	296	13.8%	297	13.9%	306	14.3%	288	13.4%
Mar-06	270	12.3%	289	13.2%	296	13.5%	339	15.5%	369	16.9%	363	16.6%	263	12.0%
Apr-06	308	15.8%	247	12.7%	290	14.9%	248	12.8%	284	14.6%	260	13.4%	308	15.8%
May-06	246	12.3%	303	15.2%	309	15.5%	304	15.2%	285	14.3%	259	13.0%	289	14.5%
Jun-06	243	11.9%	278	13.6%	259	12.7%	273	13.4%	354	17.4%	355	17.4%	278	13.6%
Jul-06	294	14.0%	344	16.4%	274	13.1%	289	13.8%	247	11.8%	285	13.6%	362	17.3%
Aug-06	306	14.7%	259	12.5%	333	16.0%	344	16.6%	305	14.7%	273	13.1%	257	12.4%
Sep-06	256	13.2%	252	13.0%	285	14.7%	242	12.4%	255	13.1%	350	18.0%	305	15.7%
Oct-06	303	15.8%	321	16.7%	302	15.8%	214	11.2%	243	12.7%	271	14.1%	263	13.7%
Nov-06	232	12.7%	263	14.4%	226	12.4%	300	16.4%	304	16.6%	269	14.7%	233	12.8%
Dec-06	299	15.4%	253	13.0%	244	12.5%	256	13.2%	261	13.4%	303	15.6%	330	17.0%
Jan-07	258	12.8%	310	15.4%	335	16.7%	344	17.1%	273	13.6%	231	11.5%	257	12.8%
Feb-07	232	12.3%	275	14.5%	307	16.2%	273	14.4%	267	14.1%	269	14.2%	269	14.2%
Mar-07	252	11.3%	295	13.2%	268	12.0%	269	12.1%	372	16.7%	424	19.0%	352	15.8%
April-07	320	16.2%	318	16.1%	260	13.1%	259	13.1%	284	14.4%	282	14.3%	255	12.9%
May-07	205	10.2%	251	12.5%	342	17.0%	356	17.7%	329	16.4%	268	13.3%	259	12.9%
June-07	249	11.9%	295	14.1%	257	12.3%	280	13.4%	282	13.5%	343	16.4%	383	18.3%
July-07	308	15.0%	337	16.4%	341	16.6%	253	12.3%	280	13.6%	265	12.9%	269	13.1%
Aug-07	230	12.1%	251	13.2%	250	13.1%	313	16.4%	297	15.6%	329	17.3%	233	12.2%
Sep-07	302	15.4%	271	13.8%	243	12.4%	248	12.6%	253	12.9%	297	15.1%	347	17.7%
Oct-07	225	11.7%	325	16.9%	330	17.1%	320	16.6%	231	12.0%	245	12.7%	250	13.0%
Nov-07	223	12.3%	243	13.4%	287	15.8%	234	12.9%	273	15.0%	319	17.5%	241	13.2%
Dec-07	293	14.7%	330	16.6%	222	11.2%	274	13.8%	275	13.8%	280	14.1%	314	15.8%
Jan-08	247	12.0%	273	13.3%	349	16.9%	309	15.0%	346	16.8%	248	12.0%	288	14.0%
Feb-08	286	14.0%	313	15.3%	269	13.1%	275	13.4%	275	13.4%	340	16.6%	288	14.1%
Mar-08	347	15.7%	374	16.9%	265	12.0%	271	12.3%	271	12.3%	321	14.5%	358	16.2%
Apr-08	249	12.6%	263	13.3%	297	15.1%	328	16.6%	266	13.5%	268	14.5%	282	14.3%
May-08	215	10.9%	238	12.1%	262	13.3%	272	13.8%	336	17.1%	330	16.8%	312	15.9%
June-08	314	15.7%	385	19.3%	233	11.7%	275	13.8%	275	13.8%	241	12.1%	276	13.8%
July-08	216	10.6%	243	11.9%	328	16.1%	327	16.0%	351	17.2%	296	14.5%	279	13.7%
Aug-08	287	14.5%	286	14.5%	251	12.7%	249	12.6%	238	12.0%	342	17.3%	324	16.4%
Sep-08	246	13.2%	313	16.8%	327	17.6%	242	13.0%	219	11.8%	268	14.4%	248	13.3%
Oct-08	284	14.1%	247	12.2%	251	12.4%	344	17.0%	295	14.6%	316	15.6%	284	14.1%

**Exhibit 6a
Emergency Response by Time of Day – Average per Hour**

	12 to 1 am	1 to 2 am	2 to 3 am	3 to 4 am	4 to 5 am	5 to 6 am	6 to 7 am	7 to 8 am	8 to 9 am	9 to 10 am	10 to 11 am	11 to noon
FY 2001	1	1	1	1	1	1	1	2	3	3	3	3
FY 2002	1	1	1	1	1	1	1	2	3	3	3	3
FY 2003	2	1	1	1	1	1	1	2	3	3	3	3
FY 2004	2	1	1	1	1	1	2	2	3	3	3	3
FY 2005	2	2	2	1	1	1	2	2	3	3	3	4
FY 2006	2	2	1	1	2	2	2	3	3	4	4	4
FY 2007	2	2	2	1	1	1	2	2	3	3	4	4
FY 2008	2	2	2	1	1	1	2	2	3	3	3	4
Oct-05	2	1	1	1	1	1	1	3	3	3	3	3
Nov-05	2	2	2	1	1	1	2	2	3	4	3	5
Dec-05	2	1	2	1	1	1	2	2	3	3	4	3
Jan-06	2	2	2	1	1	1	2	2	3	3	3	4
Feb-06	2	2	2	2	2	1	2	2	4	3	4	4
Mar-06	2	2	2	1	1	1	2	2	3	4	4	4
Apr-06	2	2	1	1	1	1	2	2	3	3	3	4
May-06	2	2	2	1	2	1	2	2	2	3	3	4
Jun-06	2	2	1	2	1	1	2	3	3	4	3	3
Jul-06	2	2	2	2	1	1	2	2	4	4	3	4
Aug-06	3	2	2	1	1	1	2	3	4	4	4	4
Sep-06	2	2	1	1	1	1	2	2	3	3	3	4
Oct-06	2	2	1	1	2	1	2	2	3	3	4	4
Nov-06	2	1	2	1	1	1	2	2	3	3	3	4
Dec-06	2	1	1	1	1	2	1	3	3	4	3	4
Jan-07	2	2	1	1	1	1	2	3	3	4	4	4
Feb-07	2	2	1	1	1	1	2	3	3	3	4	3
Mar-07	2	2	2	2	1	1	2	3	3	3	4	4
Apr-07	2	2	2	2	1	1	1	3	3	3	3	4
May-07	2	2	1	1	1	1	2	2	3	3	3	3
Jun-07	2	2	2	1	1	1	2	3	4	3	4	4
Jul-07	2	2	1	1	1	1	2	3	3	4	4	4
Aug-07	2	2	2	2	1	1	1	2	3	3	3	3
Sep-07	2	2	2	1	1	1	2	2	3	3	4	3
Oct-07	2	2	1	2	1	1	2	3	3	3	3	4
Nov-07	2	2	1	1	1	1	2	3	3	3	3	4
Dec-07	2	1	2	2	1	1	2	3	3	3	4	4
Jan-08	2	2	2	1	1	2	2	3	3	3	3	3
Feb-08	2	2	2	1	1	2	2	3	4	3	4	4
Mar-08	2	2	2	2	2	1	2	2	3	4	4	4
Apr-08	2	2	1	1	1	1	1	2	3	3	4	4
May-08	1	2	2	1	1	1	2	3	3	3	3	3
Jun-08	3	2	2	1	1	2	2	3	3	3	3	4
Jul-08	2	2	2	1	1	1	2	2	2	3	3	4
Aug-08	2	2	2	1	1	1	2	3	3	3	4	3
Sep-08	1	2	1	1	1	1	2	2	3	3	3	4
Oct-08	2	2	1	1	2	1	2	2	3	3	3	3

**Exhibit 6b
Emergency Response by Time of Day – Average by Hour (continued)**

	noon to 1 pm	1 to 2 pm	2 to 3 pm	3 to 4 pm	4 to 5 pm	5 to 6 pm	6 to 7 pm	7 to 8 pm	8 to 9 pm	9 to 10 pm	10 to 11 pm	11 to midnight
FY 2000	2	2	2	2	2	2	2	2	2	2	2	1
FY 2001	3	3	3	3	3	3	3	3	3	2	2	2
FY 2002	3	3	3	3	3	3	3	3	3	2	2	2
FY 2003	3	3	3	3	3	3	3	3	3	3	2	2
FY 2004	3	3	3	3	3	3	3	3	3	3	3	2
FY 2005	4	3	4	4	4	4	4	3	3	3	3	2
FY 2006	4	4	4	4	4	4	4	3	3	3	3	2
FY 2007	4	4	3	4	3	4	3	3	3	3	2	2
FY 2008	4	4	3	4	3	3	4	3	3	3	3	2
Oct-05	3	3	3	4	4	4	3	3	3	2	2	2
Nov-05	3	3	3	3	3	4	4	3	2	3	2	2
Dec-05	4	3	4	4	3	4	4	3	3	3	2	2
Jan-06	3	4	3	4	4	3	4	3	3	3	2	2
Feb-06	4	3	4	4	4	4	4	4	4	3	2	2
Mar-06	4	4	4	4	4	4	4	3	3	3	3	2
Apr-06	4	4	4	4	4	4	4	4	3	3	3	2
May-06	4	3	3	4	3	4	4	4	3	3	3	2
Jun-06	4	4	3	4	3	4	3	3	3	3	3	3
Jul-06	3	4	3	4	4	4	4	3	4	3	4	3
Aug-06	4	4	4	5	5	5	5	5	4	3	2	3
Sep-06	4	3	4	3	4	4	3	4	3	3	3	3
Oct-06	3	3	3	3	3	3	3	3	3	3	2	2
Nov-06	3	4	4	3	4	3	4	3	3	2	2	2
Dec-06	3	4	3	3	3	3	4	3	3	3	2	2
Jan-07	4	4	3	4	3	4	3	3	3	2	2	2
Feb-07	4	3	4	4	4	4	4	3	3	3	3	2
Mar-07	4	4	4	4	4	4	3	4	4	3	3	2
Apr-07	4	4	4	4	4	4	3	3	3	3	3	2
May-07	4	3	4	4	3	4	3	3	3	3	3	2
Jun-07	4	4	4	4	4	4	3	3	3	3	3	3
Jul-07	4	4	3	4	4	4	3	3	3	3	2	3
Aug-07	3	3	3	3	3	3	3	4	4	3	2	2
Sep-07	4	4	3	3	3	3	4	3	3	3	3	2
Oct-07	4	4	3	3	4	3	4	3	3	2	3	2
Nov-07	4	4	3	3	4	3	4	3	3	2	3	2
Dec-07	4	3	4	4	4	3	4	3	3	2	3	1
Jan-08	4	4	4	4	3	4	3	3	3	2	2	2
Feb-08	4	4	3	3	4	4	4	4	3	3	2	2
Mar-08	4	4	4	4	4	4	4	4	4	3	3	2
Apr-08	4	4	4	4	3	4	3	3	3	3	3	2
May-08	4	3	4	4	3	3	4	3	3	2	3	2
Jun-08	4	4	3	3	3	3	4	3	3	3	3	3
Jul-08	3	3	3	3	4	4	3	4	3	3	3	3
Aug-08	3	3	4	4	3	3	3	3	3	3	3	3
Sep-08	3	3	3	4	3	3	4	3	3	3	3	2
Oct-08	4	4	3	3	4	3	4	4	4	3	3	3

**Exhibit 7
Response Times**

	Dispatch Time	Turnout Time	Travel Time	Response Time	Duration Time
FY 2001	1:21	1:33	5:02	7:56	32:41
FY 2002	1:03	1:25	3:24	5:52	31:33
FY 2003	0:56	1:20	3:24	5:40	31:01
FY 2004	0:53	1:14	3:11	5:18	30:53
FY 2005	2:09	1:20	3:44	6:06	33:47
FY 2006	0:39	1:33	3:59	6:11	33:17
FY 2007	0:34	1:21	3:47	5:40	31:54
FY 2008	0:34	0:58	3:43	5:26	32:05
Oct-05	n/a	n/a	n/a	n/a	n/a
Nov-05	0:40	1:17	4:02	5:59	29:34
Dec-05	0:31	1:17	3:45	5:33	30:12
Jan-06	0:31	1:26	3:33	5:30	29:16
Feb-06	0:34	1:34	4:14	5:58	30:15
Mar-06	0:31	1:26	4:06	5:57	29:19
April-06	0:37	1:38	3:57	5:49	29:47
May-06	0:29	1:27	3:55	5:31	29:12
June-06	0:29	1:33	3:48	5:53	32:19
July-06	0:34	1:31	3:54	6:00	33:03
Aug-06	0:34	1:34	3:56	6:00	32:30
Sep-06	0:32	1:37	3:57	6:02	33:20
Oct-06	0:33	1:25	3:50	5:51	32:01
Nov-06	0:31	1:23	3:49	5:41	31:46
Dec-06	0:32	1:22	4:02	5:53	33:08
Jan-07	0:30	1:19	3:36	5:24	31:40
Feb-07	0:31	1:22	3:50	5:39	32:05
Mar-07	0:32	1:20	3:46	5:35	30:58
April-07	0:35	1:20	3:40	5:34	31:58
May-07	0:39	1:24	3:45	5:46	32:26
June-07	0:33	1:19	3:59	5:50	31:38
July-07	0:37	1:23	3:50	5:47	31:47
Aug-07	0:35	1:22	3:33	5:32	31:10
Sep-07	0:37	1:16	3:42	5:34	31:46
Oct-07	0:34	1:19	3:39	5:30	30:53
Nov-07	0:33	1:16	3:46	5:34	30:59
Dec-07	0:34	1:15	3:34	5:22	30:55
Jan-08	0:39	1:16	3:32	5:26	32:01
Feb-08	0:35	1:11	3:45	5:31	32:40
Mar-08	0:32	1:31	3:53	5:33	32:39
Apr-08	0:35	1:09	3:37	5:19	33:25
May-08	0:32	1:09	3:44	5:23	32:07
June-08	0:33	1:05	3:45	5:24	31:44
July-08	0:34	1:05	3:44	5:24	32:35
Aug-08	0:34	1:03	3:46	5:21	31:59
Sep-08	0:33	1:01	3:52	5:29	32:54
Oct-08	0:32	1:01	3:54	5:30	33:20

**Exhibit 8
Fractile Response Times**

	Calls Within										Calls Over
	1 min	2 min	3 min	4 min	5 min	6 min	7 min	8 min	9 min	10 min	10 min
FY 2001	2%	2%	6%	15%	33%	53%	69%	81%	88%	93%	7%
FY 2002	2%	3%	7%	19%	41%	61%	76%	86%	92%	95%	5%
FY 2003	1%	2%	7%	20%	41%	61%	76%	86%	92%	95%	5%
FY 2004	2%	3%	9%	23%	46%	66%	80%	89%	94%	96%	4%
FY 2005	1%	3%	9%	23%	45%	64%	78%	87%	93%	95%	5%
FY 2006	1%	4%	11%	27%	48%	66%	79%	88%	93%	95%	5%
FY 2007	1%	3%	10%	26%	48%	67%	80%	89%	94%	96%	4%
FY 2008	1%	4%	11%	29%	52%	70%	83%	90%	95%	97%	3%
Oct-05	1%	3%	9%	22%	40%	59%	73%	84%	89%	93%	7%
Nov-05	1%	3%	11%	25%	45%	62%	76%	85%	91%	94%	6%
Dec-05	1%	3%	9%	27%	50%	68%	80%	89%	94%	97%	3%
Jan-06	1%	3%	11%	28%	50%	70%	81%	90%	94%	96%	4%
Feb-06	1%	4%	11%	29%	49%	65%	79%	88%	93%	95%	5%
Mar-06	2%	5%	13%	28%	50%	67%	79%	87%	92%	95%	5%
Apr-06	2%	5%	13%	29%	50%	66%	79%	88%	93%	95%	5%
May-06	1%	4%	11%	26%	48%	65%	79%	88%	93%	96%	4%
Jun-06	1%	3%	12%	27%	50%	68%	81%	89%	94%	97%	3%
Jul-06	1%	3%	10%	27%	49%	66%	80%	89%	93%	95%	5%
Aug-06	1%	3%	9%	25%	48%	66%	80%	89%	93%	96%	4%
Sep-06	1%	3%	9%	24%	46%	67%	81%	89%	93%	96%	4%
Oct-06	1%	3%	9%	24%	47%	66%	79%	87%	93%	95%	5%
Nov-06	0%	2%	9%	27%	50%	70%	84%	91%	95%	97%	3%
Dec-06	1%	3%	10%	27%	49%	67%	80%	89%	94%	96%	4%
Jan-07	0%	2%	11%	30%	52%	70%	85%	91%	96%	98%	2%
Feb-07	0%	2%	9%	26%	48%	66%	80%	91%	95%	97%	3%
Mar-07	1%	3%	5%	24%	47%	65%	78%	87%	93%	96%	4%
Apr-07	0%	3%	10%	26%	49%	67%	82%	91%	95%	97%	3%
May-07	1%	2%	10%	26%	48%	66%	78%	87%	93%	96%	4%
Jun-07	1%	3%	10%	23%	42%	62%	76%	86%	92%	95%	5%
Jul-07	1%	3%	9%	25%	45%	64%	78%	87%	93%	95%	5%
Aug-07	1%	2%	9%	25%	49%	68%	80%	89%	94%	96%	4%
Sep-07	1%	3%	10%	27%	51%	68%	83%	90%	94%	97%	3%
Oct-07	1%	2%	9%	25%	49%	70%	82%	90%	95%	98%	2%
Nov-07	1%	3%	10%	27%	49%	67%	80%	89%	95%	97%	3%
Dec-07	1%	4%	11%	27%	52%	71%	82%	90%	95%	98%	2%
Jan-08	1%	3%	10%	30%	51%	69%	82%	90%	94%	97%	3%
Feb-08	1%	3%	10%	28%	49%	68%	81%	90%	94%	97%	3%
Mar-08	1%	4%	10%	26%	51%	69%	81%	89%	94%	97%	3%
Apr-08	1%	4%	11%	27%	53%	72%	83%	90%	95%	97%	3%
May-08	1%	4%	13%	30%	54%	71%	85%	92%	96%	98%	2%
Jun-08	1%	4%	13%	32%	54%	72%	84%	92%	96%	98%	2%
Jul-08	1%	4%	12%	30%	52%	71%	84%	91%	95%	97%	3%
Aug-08	1%	4%	12%	31%	54%	71%	83%	90%	94%	97%	3%
Sep-08	1%	3%	12%	30%	52%	70%	82%	90%	94%	97%	3%
Oct-08	1%	4%	11%	29%	53%	70%	83%	91%	95%	97%	3%

**Exhibit 9
Pompano Beach Fire Rescue
Fractile Dispatch Times**

	Calls Within										Calls Over
	1 min	2 min	3 min	4 min	5 min	6 min	7 min	8 min	9 min	10 min	10 min
FY 2001	48%	87%	95%	97%	98%	99%	99%	99%	99%	99%	1%
FY 2002	65%	91%	96%	98%	98%	99%	99%	99%	99%	99%	1%
FY 2003	72%	92%	97%	98%	99%	99%	99%	99%	100%	100%	0%
FY 2004	74%	93%	97%	98%	99%	99%	99%	99%	100%	100%	0%
FY 2005	88%	96%	98%	99%	99%	99%	99%	99%	100%	100%	0%
FY 2006	88%	96%	98%	99%	99%	99%	99%	99%	100%	100%	0%
FY 2007	88%	96%	98%	99%	99%	99%	100%	100%	100%	100%	0%
FY 2008	88%	96%	98%	99%	99%	99%	100%	100%	100%	100%	0%
Oct-05	79%	93%	95%	97%	97%	98%	98%	98%	98%	99%	1%
Nov-05	84%	94%	97%	98%	99%	99%	99%	99%	99%	99%	1%
Dec-05	89%	96%	98%	99%	99%	99%	100%	100%	100%	100%	0%
Jan-06	91%	96%	98%	99%	99%	99%	99%	99%	99%	99%	0%
Feb-06	86%	95%	98%	99%	99%	99%	99%	100%	100%	100%	1%
Mar-06	90%	96%	98%	99%	99%	99%	99%	100%	100%	100%	0%
Apr-06	88%	95%	98%	98%	98%	99%	99%	99%	99%	99%	1%
May-06	90%	96%	98%	98%	99%	99%	99%	100%	100%	100%	0%
Jun-06	91%	97%	98%	99%	100%	100%	100%	100%	100%	100%	0%
Jul-06	90%	96%	98%	99%	99%	99%	100%	100%	100%	100%	0%
Aug-06	88%	96%	98%	98%	99%	100%	100%	100%	100%	100%	0%
Sep-06	88%	95%	98%	98%	99%	100%	100%	100%	100%	100%	0%
Oct-06	88%	96%	97%	99%	99%	99%	99%	100%	100%	100%	0%
Nov-06	89%	96%	98%	99%	99%	100%	100%	100%	100%	100%	0%
Dec-06	88%	97%	98%	99%	99%	99%	100%	100%	100%	100%	0%
Jan-07	91%	96%	98%	99%	99%	99%	99%	100%	100%	100%	0%
Feb-07	90%	96%	98%	99%	99%	100%	100%	100%	100%	100%	0%
Mar-07	89%	95%	97%	99%	99%	100%	100%	100%	100%	100%	0%
Apr-07	88%	95%	97%	98%	99%	99%	99%	100%	100%	100%	0%
May-07	86%	95%	97%	98%	99%	99%	99%	100%	100%	100%	0%
Jun-07	89%	96%	98%	99%	99%	99%	99%	99%	100%	100%	0%
Jul-07	87%	95%	98%	99%	99%	99%	99%	100%	100%	100%	0%
Aug-07	89%	95%	98%	98%	99%	99%	99%	99%	100%	100%	0%
Sep-07	87%	96%	98%	98%	99%	99%	100%	100%	100%	100%	0%
Oct-07	87%	96%	98%	99%	99%	99%	99%	100%	100%	100%	0%
Nov-07	88%	96%	98%	99%	99%	99%	100%	100%	100%	100%	0%
Dec-07	87%	96%	98%	99%	99%	99%	100%	100%	100%	100%	0%
Jan-08	88%	95%	98%	99%	99%	99%	99%	99%	100%	100%	0%
Feb-08	88%	96%	98%	99%	99%	99%	99%	100%	100%	100%	0%
Mar-08	89%	97%	98%	99%	99%	99%	99%	99%	99%	99%	1%
Apr-08	86%	95%	98%	98%	99%	99%	99%	100%	100%	100%	0%
May-08	90%	97%	98%	99%	99%	100%	100%	100%	100%	100%	0%
Jun-08	88%	96%	98%	99%	99%	99%	99%	100%	100%	100%	0%
Jul-08	88%	96%	98%	99%	99%	99%	100%	100%	100%	100%	0%
Aug-08	88%	96%	98%	99%	99%	99%	100%	100%	100%	100%	0%
Sep-08	87%	96%	98%	99%	99%	100%	100%	100%	100%	100%	0%
Oct-08	89%	97%	98%	99%	99%	100%	100%	100%	100%	100%	0%

**Exhibit 10
Fractile Turnout Times**

	Calls Within										Calls Over
	1 min	2 min	3 min	4 min	5 min	6 min	7 min	8 min	9 min	10 min	10 min
FY 2001	25%	81%	96%	97%	98%	98%	98%	99%	99%	99%	1%
FY 2002	28%	84%	97%	98%	99%	99%	99%	99%	99%	99%	1%
FY 2003	27%	86%	98%	99%	99%	99%	99%	100%	100%	100%	0%
FY 2004	34%	90%	98%	99%	99%	99%	99%	99%	99%	99%	1%
FY 2005	37%	88%	98%	99%	99%	99%	99%	99%	99%	100%	0%
FY 2006	32%	83%	96%	98%	98%	99%	99%	99%	99%	99%	1%
FY 2007	36%	87%	97%	99%	99%	99%	99%	100%	100%	100%	0%
FY 2008	44%	92%	99%	100%	100%	100%	100%	100%	100%	100%	0%
Oct-05	36%	84%	97%	99%	99%	99%	99%	99%	100%	100%	0%
Nov-05	36%	85%	97%	99%	99%	100%	100%	100%	100%	100%	0%
Dec-05	33%	85%	97%	99%	99%	100%	100%	100%	100%	100%	0%
Jan-06	32%	83%	96%	98%	98%	99%	99%	99%	99%	99%	1%
Feb-06	35%	82%	95%	96%	97%	97%	98%	98%	98%	98%	2%
Mar-06	32%	82%	95%	97%	98%	98%	99%	99%	99%	99%	1%
Apr-06	30%	80%	93%	96%	97%	97%	98%	98%	98%	98%	2%
May-06	29%	82%	95%	97%	98%	98%	98%	98%	99%	99%	1%
June-06	30%	82%	96%	98%	99%	99%	99%	99%	99%	99%	1%
July-06	31%	83%	96%	98%	99%	99%	99%	99%	99%	99%	1%
Aug-06	28%	82%	95%	98%	99%	99%	99%	99%	99%	99%	1%
Sep-06	31%	83%	96%	98%	98%	99%	99%	99%	99%	99%	1%
Oct-06	32%	84%	96%	98%	98%	99%	99%	99%	100%	100%	0%
Nov-06	35%	87%	97%	99%	99%	99%	99%	99%	99%	99%	1%
Dec-06	36%	88%	97%	99%	99%	99%	99%	100%	100%	100%	0%
Jan-07	33%	89%	97%	99%	99%	99%	99%	100%	100%	100%	0%
Feb-07	36%	88%	98%	99%	99%	99%	99%	99%	99%	100%	0%
Mar-07	38%	87%	97%	99%	99%	99%	100%	100%	100%	100%	0%
Apr-07	36%	88%	97%	98%	99%	99%	99%	99%	99%	99%	1%
May-07	36%	88%	97%	99%	99%	99%	100%	100%	100%	100%	0%
Jun-07	35%	87%	98%	99%	100%	100%	100%	100%	100%	100%	0%
Jul-07	37%	87%	97%	99%	99%	99%	99%	100%	100%	100%	0%
Aug-07	34%	88%	97%	98%	99%	99%	99%	100%	100%	100%	0%
Sep-07	41%	89%	98%	99%	100%	100%	100%	100%	100%	100%	0%
Oct-07	36%	88%	98%	99%	99%	99%	99%	99%	100%	100%	0%
Nov-07	39%	89%	99%	99%	100%	100%	100%	100%	100%	100%	0%
Dec-07	40%	90%	98%	99%	99%	100%	100%	100%	100%	100%	0%
Jan-08	39%	88%	98%	99%	99%	100%	100%	100%	100%	100%	0%
Feb-08	43%	92%	98%	99%	99%	100%	100%	100%	100%	100%	0%
Mar-08	45%	93%	99%	99%	100%	100%	100%	100%	100%	100%	0%
Apr-08	45%	93%	99%	100%	100%	100%	100%	100%	100%	100%	0%
May-08	44%	93%	99%	100%	100%	100%	100%	100%	100%	100%	0%
Jun-08	48%	95%	100%	100%	100%	100%	100%	100%	100%	100%	0%
Jul-08	49%	93%	99%	99%	100%	100%	100%	100%	100%	100%	0%
Aug-08	51%	95%	99%	100%	100%	100%	100%	100%	100%	100%	0%
Sep-08	52%	95%	99%	100%	100%	100%	100%	100%	100%	100%	0%
Oct-08	53%	95%	100%	100%	100%	100%	100%	100%	100%	100%	0%

**Exhibit 11
Fractile Travel Times**

	Calls Within										Calls Over
	1 min	2 min	3 min	4 min	5 min	6 min	7 min	8 min	9 min	10 min	10 min
FY 2001	9%	21%	44%	63%	76%	85%	90%	92%	94%	95%	5%
FY 2002	8%	22%	48%	67%	80%	88%	92%	95%	96%	96%	4%
FY 2003	8%	21%	46%	66%	80%	88%	93%	95%	96%	97%	3%
FY 2004	8%	22%	47%	67%	81%	89%	93%	95%	96%	97%	3%
FY 2005	8%	22%	46%	66%	80%	88%	93%	95%	97%	97%	3%
FY 2006	9%	22%	44%	64%	77%	86%	91%	94%	95%	96%	4%
FY 2007	7%	20%	42%	63%	77%	87%	93%	95%	97%	97%	3%
FY 2008	7%	19%	42%	64%	78%	88%	93%	96%	97%	98%	2%
Oct-05	8%	19%	42%	62%	77%	86%	91%	94%	95%	96%	4%
Nov-05	10%	21%	41%	62%	75%	85%	91%	93%	95%	96%	4%
Dec-05	8%	21%	44%	66%	79%	88%	93%	96%	97%	97%	3%
Jan-06	9%	22%	44%	65%	78%	87%	91%	93%	95%	95%	5%
Feb-06	8%	21%	43%	62%	75%	85%	89%	91%	93%	94%	6%
Mar-06	11%	23%	44%	63%	76%	84%	89%	91%	93%	94%	6%
Apr-06	12%	26%	46%	64%	75%	84%	89%	91%	93%	94%	6%
May-06	10%	23%	44%	63%	78%	87%	92%	94%	95%	96%	4%
June-06	11%	25%	47%	66%	79%	88%	92%	94%	95%	96%	4%
July-06	10%	23%	47%	65%	78%	87%	92%	94%	96%	96%	4%
Aug-06	9%	22%	44%	64%	78%	88%	93%	95%	96%	97%	3%
Sep-06	7%	20%	42%	64%	80%	88%	92%	95%	96%	98%	4%
Oct-06	8%	20%	43%	63%	77%	87%	91%	94%	95%	96%	4%
Nov-06	7%	20%	43%	65%	80%	89%	94%	96%	97%	97%	3%
Dec-06	7%	19%	41%	61%	76%	87%	92%	95%	96%	97%	3%
Jan-07	7%	22%	45%	66%	80%	89%	94%	96%	98%	98%	2%
Feb-07	7%	19%	41%	60%	78%	88%	93%	95%	97%	97%	3%
Mar-07	7%	20%	43%	63%	76%	85%	91%	95%	97%	98%	2%
Apr-07	8%	21%	43%	63%	77%	89%	94%	96%	97%	98%	2%
May-07	7%	21%	44%	62%	76%	86%	92%	95%	96%	97%	3%
Jun-07	9%	18%	37%	58%	73%	85%	91%	95%	97%	98%	2%
Jul-07	8%	19%	40%	61%	75%	85%	92%	95%	97%	98%	2%
Aug-07	9%	22%	44%	65%	79%	87%	93%	96%	97%	98%	2%
Sep-07	6%	19%	44%	66%	79%	88%	93%	96%	97%	98%	2%
Oct-07	5%	18%	42%	65%	80%	89%	94%	96%	97%	98%	2%
Nov-07	8%	19%	43%	63%	78%	88%	93%	96%	98%	99%	1%
Dec-07	7%	20%	43%	65%	80%	89%	94%	96%	97%	98%	2%
Jan-08	8%	20%	45%	67%	80%	89%	94%	97%	98%	99%	1%
Feb-08	6%	18%	41%	62%	77%	88%	93%	96%	98%	98%	2%
Mar-08	6%	17%	41%	62%	76%	86%	92%	95%	97%	98%	2%
Apr-08	7%	20%	44%	65%	78%	88%	93%	96%	97%	97%	3%
May-08	7%	19%	44%	65%	81%	90%	94%	96%	97%	98%	2%
Jun-08	6%	19%	41%	63%	79%	89%	94%	97%	98%	98%	2%
Jul-08	7%	19%	40%	62%	77%	87%	92%	95%	96%	97%	3%
Aug-08	6%	18%	41%	63%	77%	86%	91%	95%	96%	97%	3%
Sep-08	6%	20%	41%	60%	76%	86%	92%	95%	97%	98%	2%
Oct-08	5%	17%	39%	62%	77%	87%	93%	95%	97%	98%	2%

**Exhibit 12
Response Time by Zone (M:SS)**

	Zone 11	Zone 24	Zone 52	Zone 61	Zone 63	Zone 103
FY 2001	6:11	9:40	7:09	10:52	6:51	7:09
FY 2002	5:25	5:51	6:31	6:37	6:06	6:15
FY 2003	5:19	5:58	6:39	6:14	5:39	6:25
FY 2004	4:51	5:30	5:50	5:55	5:18	6:17
FY 2005	5:08	6:00	6:36	6:32	5:53	5:50
FY 2006	5:11	5:58	6:37	6:45	5:51	6:02
FY 2007	4:49	5:37	5:56	6:17	5:19	5:32
FY 2008	4:34	5:28	5:43	6:08	5:19	5:32
Oct-05	n/a	n/a	n/a	n/a	n/a	n/a
Nov-05	5:56	6:14	7:37	6:56	5:32	5:21
Dec-05	4:58	5:24	6:08	6:52	5:45	5:48
Jan-06	4:59	5:31	6:15	6:18	5:42	5:35
Feb-06	5:31	5:27	6:53	7:04	6:11	6:54
Mar-06	5:25	6:06	7:05	6:42	5:33	6:55
Apr-06	5:07	6:21	6:35	6:49	5:57	6:12
May-06	5:01	5:52	6:14	6:51	5:49	5:53
June-06	4:49	5:39	6:25	6:12	5:46	5:37
July-06	5:42	5:36	5:56	6:38	6:04	5:55
Aug-06	5:19	5:45	6:31	6:29	5:29	5:59
Sep-06	5:20	5:37	6:48	6:15	5:38	6:04
Oct-06	5:06	6:00	6:00	6:28	5:18	5:51
Nov-06	5:02	5:18	5:57	6:13	5:36	5:25
Dec-06	5:18	5:25	6:19	6:07	5:40	5:57
Jan-07	4:28	5:09	5:47	5:59	5:15	5:12
Feb-07	4:52	5:38	5:43	6:20	5:05	5:34
Mar-07	4:51	6:05	5:42	6:06	5:09	5:33
Apr-07	4:55	5:22	5:42	6:18	5:08	5:25
May-07	4:46	6:18	5:48	6:33	5:15	5:31
June-07	4:34	5:27	6:11	6:34	5:27	5:32
July-07	4:45	6:22	6:08	6:17	5:20	5:33
Aug-07	4:37	5:24	5:41	6:13	5:21	5:44
Sep-07	4:49	5:25	6:01	6:07	5:13	5:17
Oct-07	4:41	5:38	5:50	6:14	5:01	5:08
Nov-07	4:15	5:34	5:54	6:06	5:16	5:37
Dec-07	4:27	5:28	5:36	5:53	5:04	5:16
Jan-08	4:28	5:49	5:45	5:56	4:58	5:23
Feb-08	4:54	5:31	5:36	6:22	5:08	5:29
Mar-08	4:35	5:29	6:14	6:01	4:52	5:39
Apr-08	4:10	5:19	5:41	6:07	5:01	5:03
May-08	4:46	5:26	5:22	6:14	4:58	5:30
June-08	4:31	5:15	5:29	6:19	5:22	5:02
July-08	4:49	5:20	5:31	6:04	4:58	5:17
Aug-08	4:36	5:09	5:35	6:10	5:00	5:13
Sep-08	4:28	5:39	6:02	6:11	4:47	5:10
Oct-08	4:40	5:27	5:50	5:51	5:28	5:03

**Exhibit 13
Calls Within 6 Minutes by Zone**

	Zone 11	Zone 24	Zone 52	Zone 61	Zone 63	Zone 103
FY 2001	82%	65%	49%	44%	58%	56%
FY 2002	79%	67%	55%	50%	62%	69%
FY 2003	80%	60%	54%	55%	70%	52%
FY 2004	83%	68%	58%	59%	74%	54%
FY 2005	82%	71%	54%	53%	70%	69%
FY 2006	84%	71%	58%	53%	73%	67%
FY 2007	85%	70%	59%	52%	76%	69%
FY 2008	88%	73%	62%	54%	80%	72%
Oct-05	78%	71%	50%	47%	63%	62%
Nov-05	80%	66%	50%	57%	71%	71%
Dec-05	87%	76%	57%	58%	77%	74%
Jan-06	86%	75%	61%	60%	61%	68%
Feb-06	81%	73%	56%	55%	71%	65%
Mar-06	84%	69%	58%	55%	74%	70%
Apr-06	84%	68%	59%	53%	75%	67%
May-06	79%	74%	61%	48%	74%	65%
June-06	90%	74%	57%	55%	77%	71%
July-06	80%	73%	63%	48%	68%	69%
Aug-06	87%	67%	60%	50%	77%	61%
Sep-06	88%	72%	57%	54%	75%	64%
Oct-06	80%	70%	60%	52%	77%	64%
Nov-06	89%	75%	62%	54%	76%	71%
Dec-06	87%	73%	57%	55%	74%	67%
Jan-07	92%	75%	63%	54%	74%	76%
Feb-07	85%	67%	61%	52%	79%	66%
Mar-07	82%	62%	62%	53%	80%	65%
Apr-07	84%	68%	61%	56%	77%	67%
May-07	83%	71%	63%	47%	75%	70%
June-07	86%	70%	53%	48%	71%	70%
July-07	85%	66%	52%	54%	71%	68%
Aug-07	85%	68%	61%	51%	75%	72%
Sep-07	85%	70%	57%	52%	82%	72%
Oct-07	86%	74%	62%	51%	82%	75%
Nov-07	91%	66%	59%	58%	73%	71%
Dec-07	91%	74%	63%	54%	80%	74%
Jan-08	88%	74%	59%	54%	82%	66%
Feb-08	85%	69%	62%	47%	80%	67%
Mar-08	88%	70%	60%	54%	82%	82%
Apr-08	94%	74%	58%	56%	84%	79%
May-08	86%	73%	66%	55%	76%	79%
June-08	87%	78%	65%	57%	77%	74%
July-08	85%	75%	67%	56%	79%	71%
Aug-08	88%	81%	63%	53%	83%	76%
Sep-08	89%	68%	59%	57%	83%	75%
Oct-08	88%	71%	61%	58%	76%	80%

CITY OF POMPANO BEACH
FIRE RESPONSE ZONES

